



---

---

---

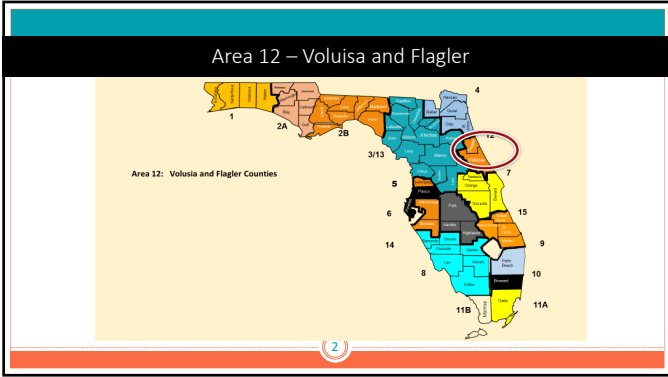
---

---

---

---

---



---

---

---

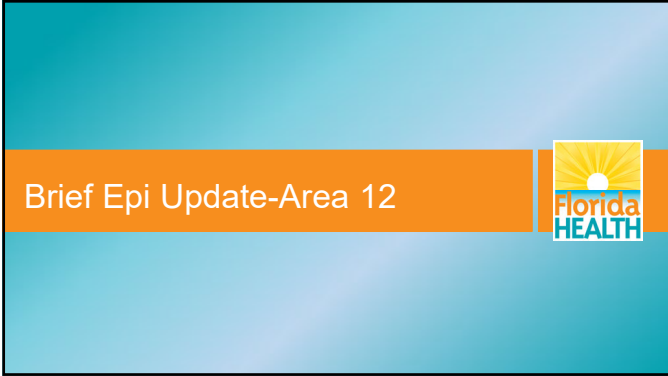
---

---

---

---

---



---

---

---

---

---

---

---

---

Technical Notes

- ✘ HIV diagnoses by year of diagnosis represent persons whose HIV was diagnosed in that year, regardless of AIDS status at time of diagnosis.
- ✘ AIDS and HIV diagnoses by year of diagnosis are not mutually exclusive and cannot be added together.
- ✘ HIV prevalence data represent persons who were living with an HIV diagnosis in the reporting area through the end of the calendar year (regardless of where they were diagnosed).
- ✘ Resident deaths due to HIV represent persons who resided in Florida and whose underlying cause of death was HIV, regardless if their HIV status was reported in Florida or not.

---

---

---

---

---

---

---

---

Technical Notes, Continued

- ✘ Adult diagnoses represent ages 13 and older; pediatric diagnoses are those under the age of 13.
  - ✘ For data by year of diagnosis, the age is by age at diagnosis.
  - ✘ For living data, the age is by current age at the end of the most recent calendar year, regardless of age at diagnosis
- ✘ Unless otherwise noted, Whites are non-Hispanic, Blacks are non-Hispanic and Other (which may be omitted in some graphs due to small numbers) represents Asian, American Indian, or mixed races
- ✘ For data by year, area and county data will exclude Department of Corrections diagnoses. For living data, Department of Corrections will **not** be excluded from area and county data.

---

---

---

---

---

---

---

---

Four Key Components

- ✘ Implement routine HIV and Sexually Transmitted Infections (STIs) screening in health care settings and priority testing in non-health care settings
- ✘ Provide rapid access to treatment and ensure retention in care (Test and Treat)
- ✘ Improve and promote access to antiretroviral pre-exposure prophylaxis (PrEP) and non-occupational post-exposure prophylaxis (nPEP)
- ✘ Increase HIV awareness and community response through outreach, engagement, and messaging




---

---

---

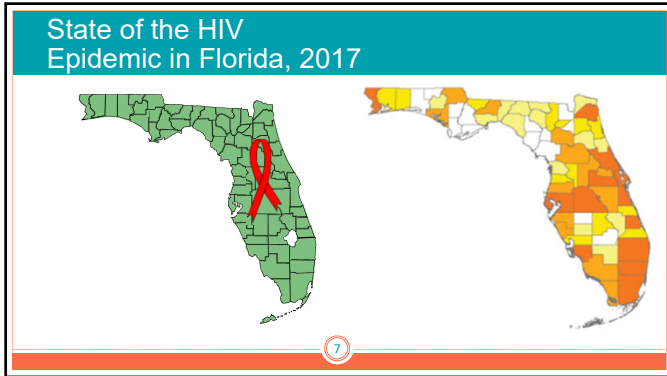
---

---

---

---

---



---

---

---

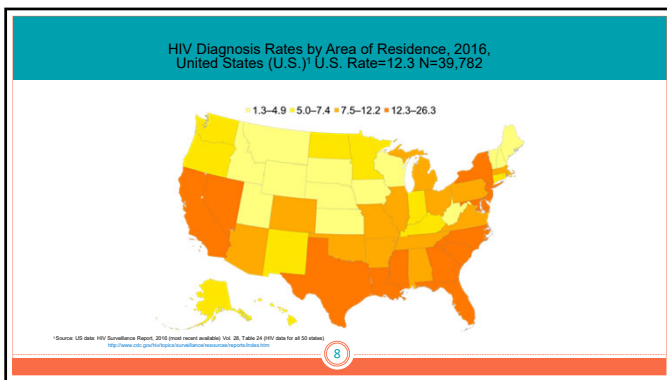
---

---

---

---

---



---

---

---

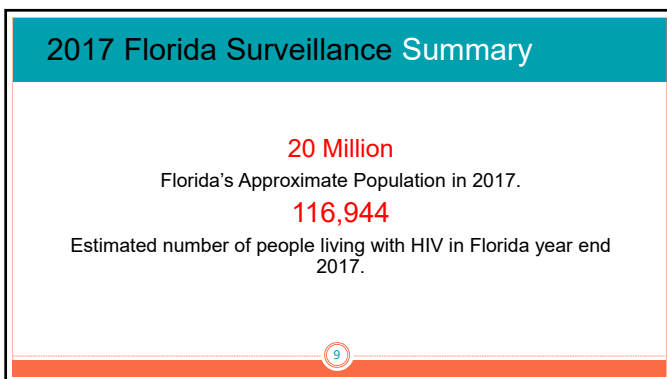
---

---

---

---

---



---

---

---

---

---

---

---

---

### 2017 Florida Surveillance Summary

**116,944**  
Persons who were living with an HIV diagnosis in Florida year-end 2017

**4,949**  
Number of people Receiving an HIV diagnosis in Florida 2017.

**2,044**  
Number of people receiving an AIDS diagnosis in Florida in 2017

10

---

---

---

---

---

---

---

---

---

---

### Florida

In 2016, Florida had an HIV case rate of 24.0 per 100,000 people which places the state at the **third highest among states** with the top 10 highest rates. Florida's case rate was higher than the **US average case** rate of 12.3 per 100,000 people. **Miami, FL and Ft. Lauderdale, FL** take the **top two rankings** for metropolitan statistical areas with case rates of 47.0 and 40.1 respectively

11

---

---

---

---

---

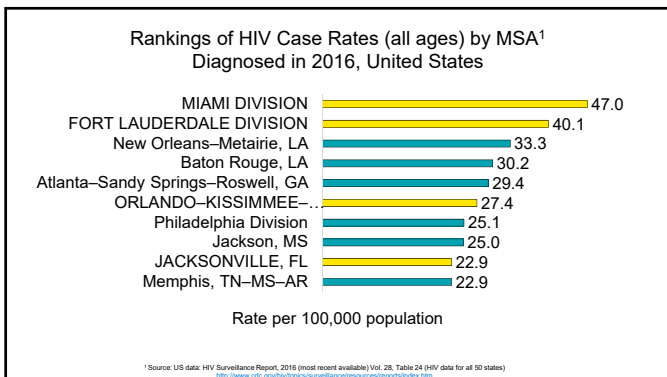
---

---

---

---

---




---

---

---

---

---

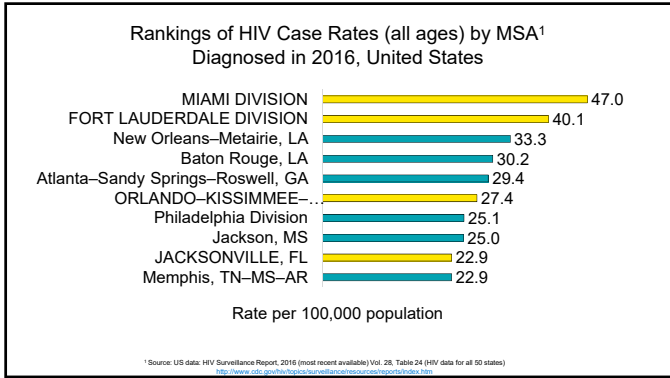
---

---

---

---

---




---

---

---

---

---

---

---

---

---

---

---

---

### The Epidemic in Area 12

	2016	2017	Trend
Population	622,621	631,197	1.4% increase
Diagnosed HIV cases	91	102	12.1% increase
Diagnosed AIDS cases	49	47	4.1% decrease
Pediatric AIDS cases diagnosed	0	0	
Perinatal HIV cases	0	0	
People diagnosed living with HIV (Prevalence)	1,993	2,059	3.3% increase
HIV-related deaths	27	21	22.2% decrease

Division of Disease Control and Health Protection

---

---

---

---

---

---

---

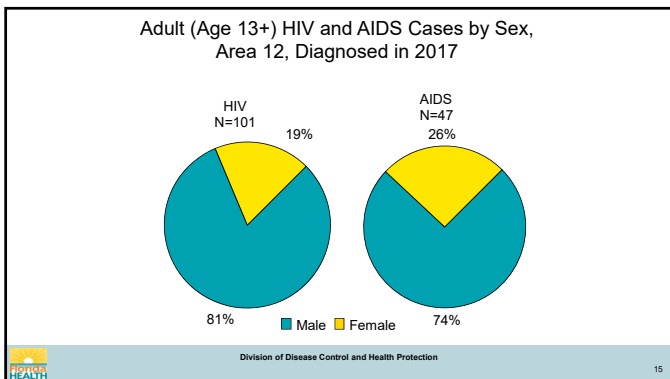
---

---

---

---

---




---

---

---

---

---

---

---

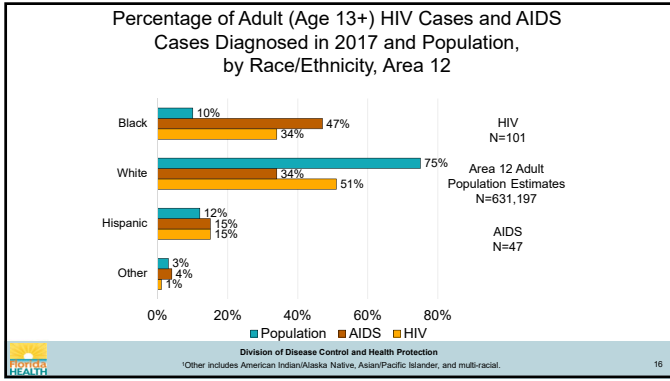
---

---

---

---

---




---

---

---

---

---

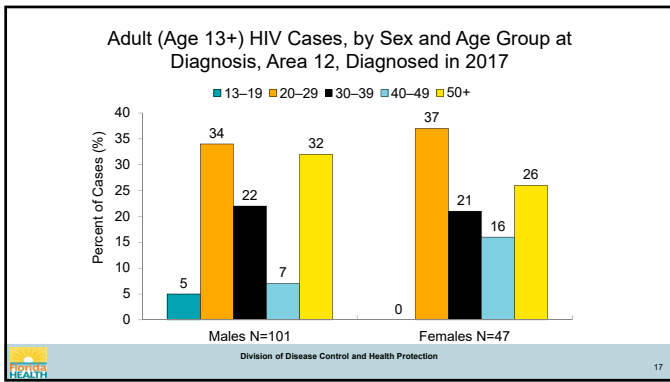
---

---

---

---

---




---

---

---

---

---

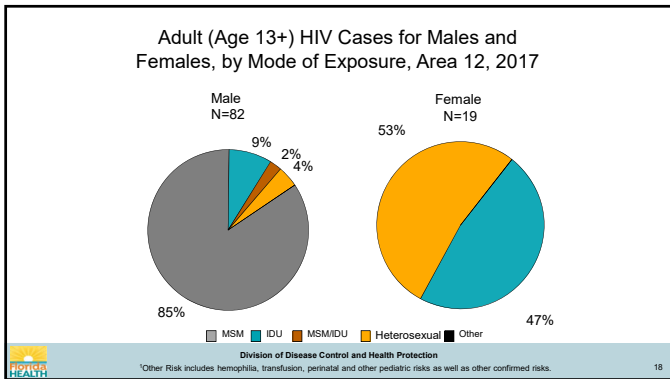
---

---

---

---

---




---

---

---

---

---

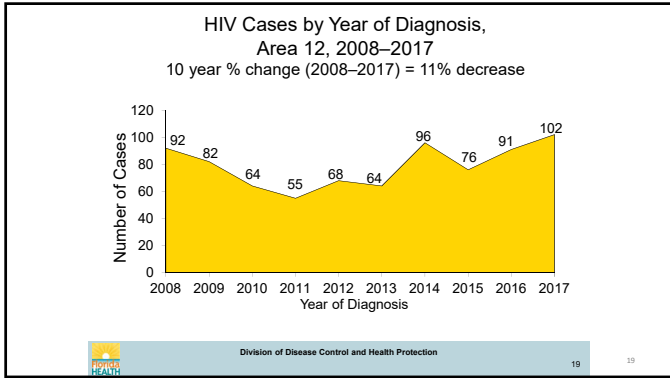
---

---

---

---

---




---

---

---

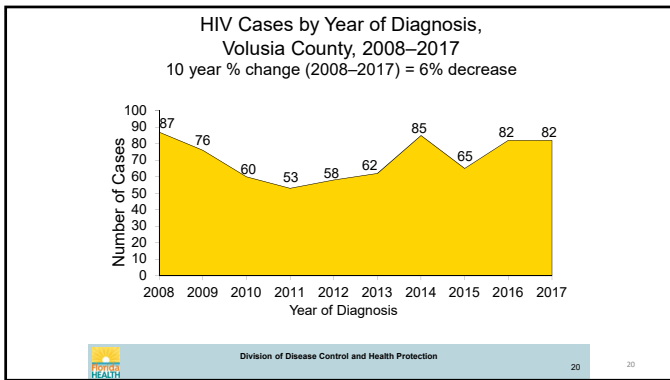
---

---

---

---

---




---

---

---

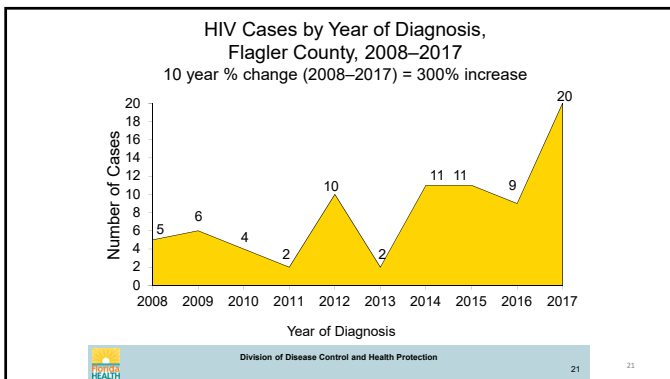
---

---

---

---

---




---

---

---

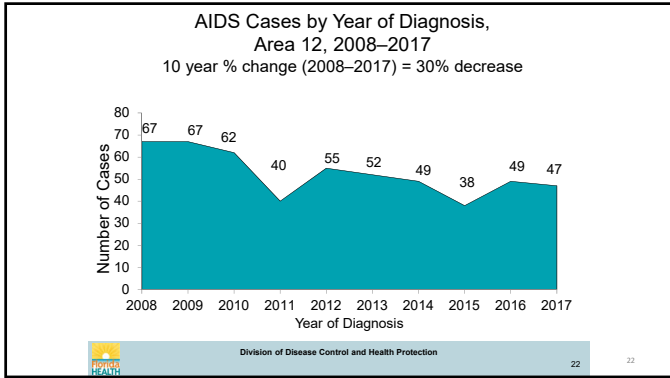
---

---

---

---

---




---

---

---

---

---

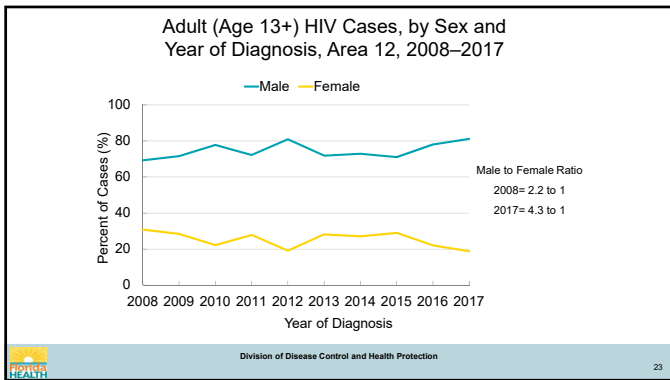
---

---

---

---

---




---

---

---

---

---

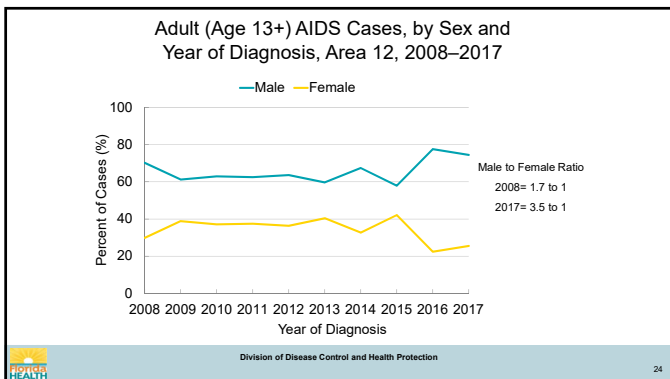
---

---

---

---

---




---

---

---

---

---

---

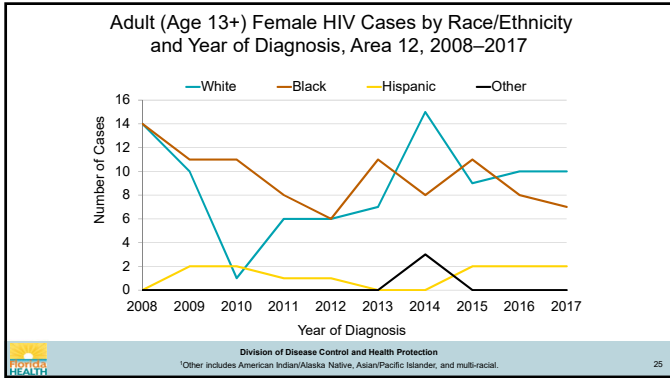
---

---

---

---






---

---

---

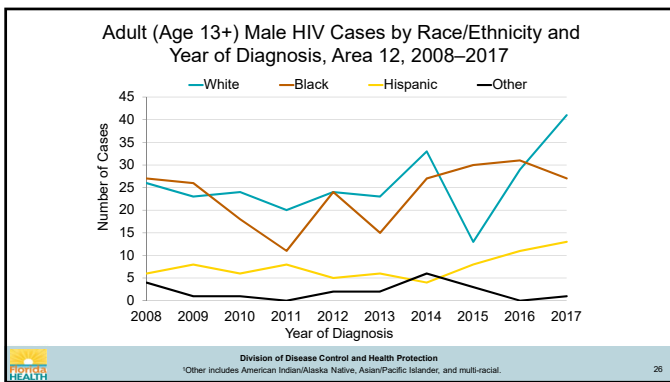
---

---

---

---

---




---

---

---

---

---

---

---

---

## Co-Morbidity Data

Division of Disease Control and Health Protection

---

---

---

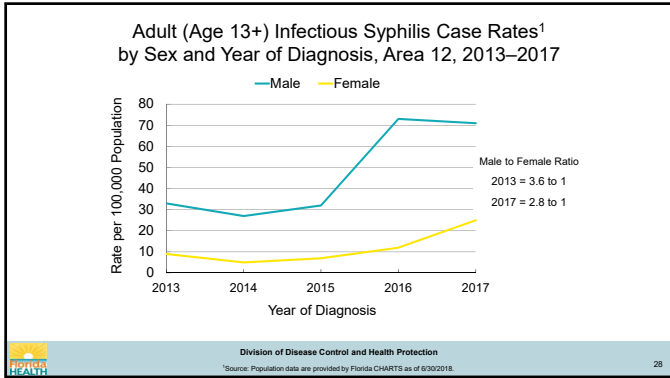
---

---

---

---

---




---

---

---

---

---

---

---

---

---

---

### Adult (Age 13+) HIV Diagnoses with STD<sup>1</sup> by Type and Year of STD Report,<sup>2</sup> 2013–2017, Area 12

Years of STD Report	Syphilis	Chlamydia	Gonorrhea
2013	14	13	10
2014	15	17	12
2015	20	20	24
2016	34	22	13
2017	25	23	29

Division of Disease Control and Health Protection  
<sup>1</sup>Source: HIV, STD Section as of 6/30/2018.

---

---

---

---

---

---

---

---

---

---

## Persons Living with HIV

Division of Disease Control and Health Protection

---

---

---

---

---

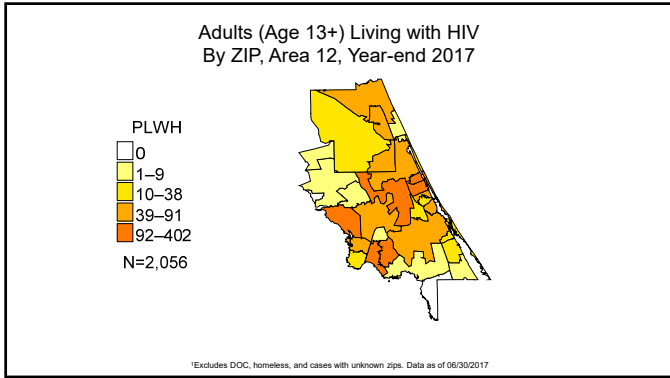
---

---

---

---

---



---

---

---

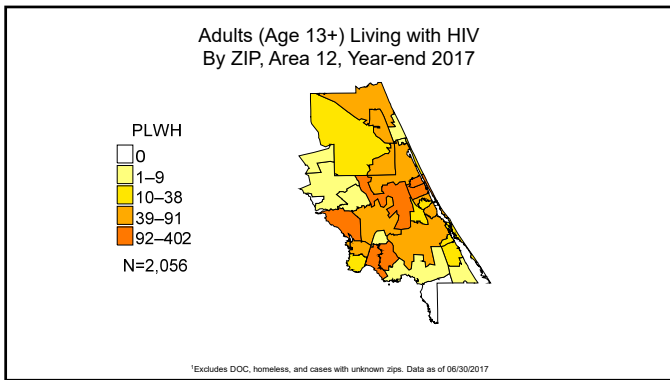
---

---

---

---

---



---

---

---

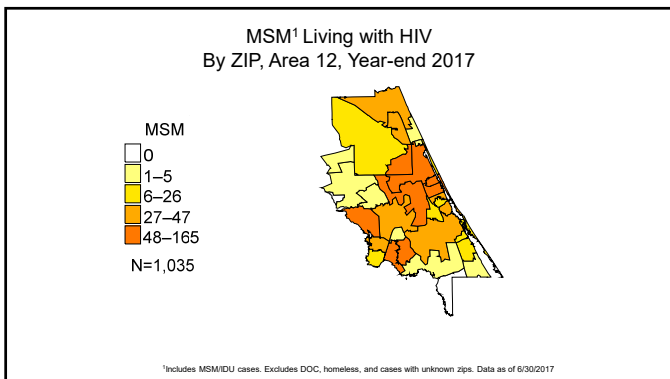
---

---

---

---

---



---

---

---

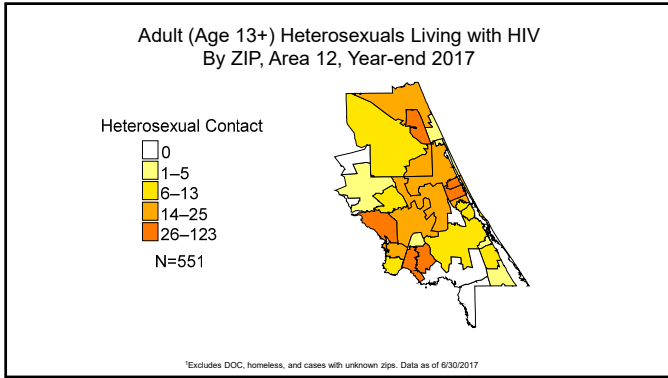
---

---

---

---

---




---

---

---

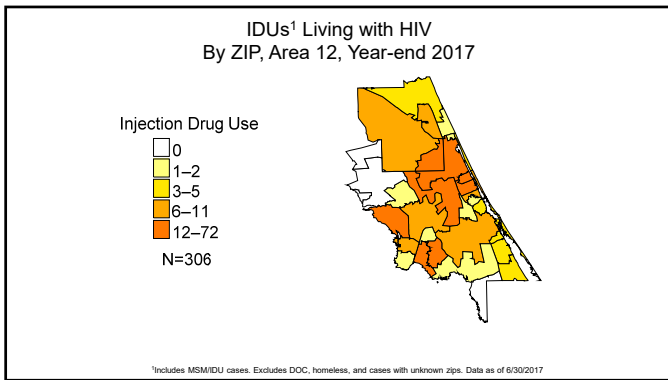
---

---

---

---

---




---

---

---

---

---

---

---

---

### One-In-Statements for Adults (Age 13+) Living with HIV in Area 12, Year-end 2017

- ⚡ One in 269 adults in Area 12 were known to be living with HIV
- ⚡ One in 444 Whites were living with HIV
- ⚡ One in 69 Blacks were living with HIV
- ⚡ One in 219 Hispanics were living with HIV

36

---

---

---

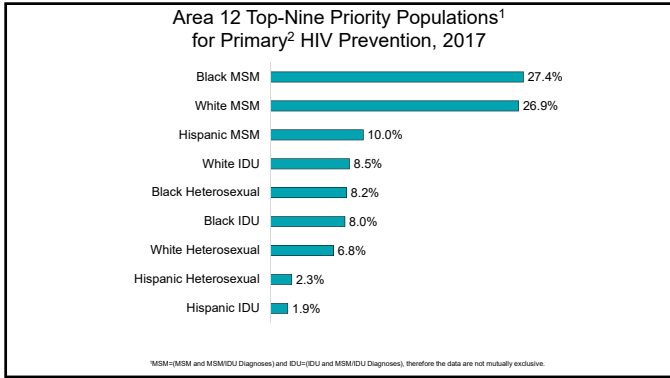
---

---

---

---

---




---

---

---

---

---

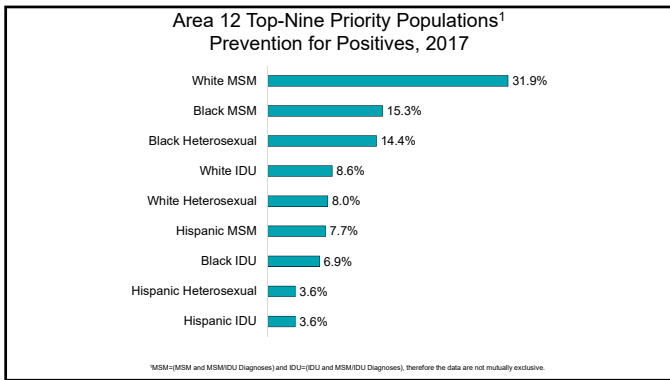
---

---

---

---

---




---

---

---

---

---

---

---

---

---

---

### HIV Care Continuum Definitions

- ✘ **HIV Diagnosed:** The number of persons known to be diagnosed and living in Florida with HIV (PLWH) at the end of 2017, from data as of 6/30/2018
- ✘ **Ever in Care:** PLWH with at least one documented Viral Load (VL) or CD4 lab, medical visit, or prescription from HIV diagnosis through 3/31/2018
- ✘ **Currently in Care:** PLWH with at least one documented VL or CD4 lab, medical visit, or prescription from 1/1/2017 through 3/31/2018
- ✘ **Retained in Care:** PLWH with two or more documented VL or CD4 labs, medical visits, or prescriptions at least three months apart from 1/1/2017 through 6/30/2018
- ✘ **Suppressed Viral Load:** PLWH with a suppressed VL (<200 copies/mL) on the last VL from 1/1/2017 through 3/31/2018

39

---

---

---

---

---

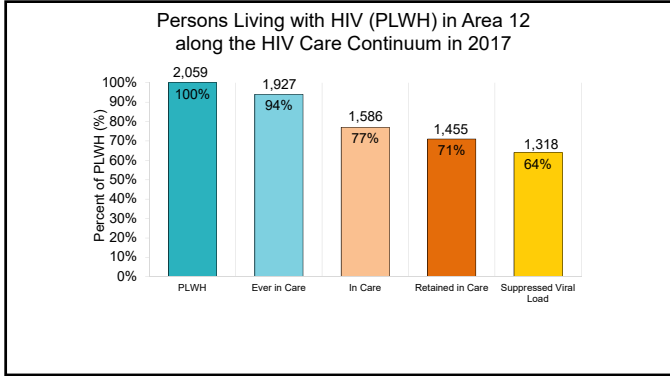
---

---

---

---

---



---

---

---

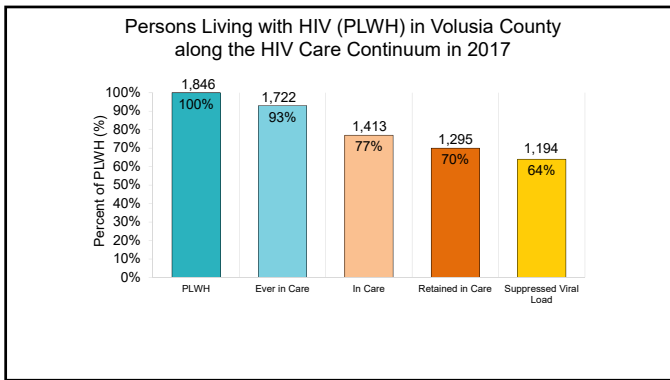
---

---

---

---

---



---

---

---

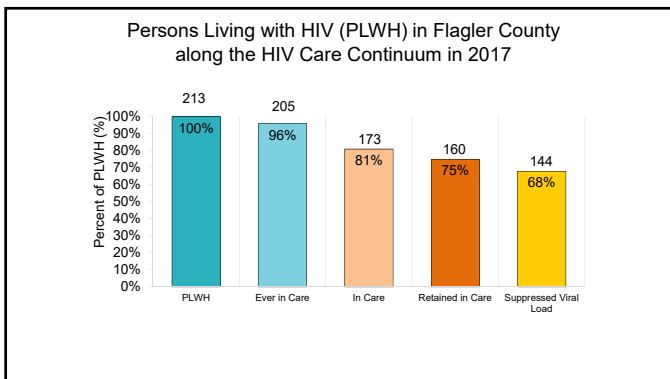
---

---

---

---

---



---

---

---

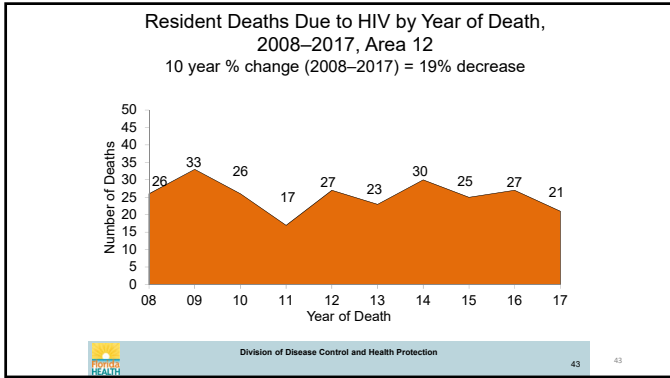
---

---

---

---

---



---

---

---

---

---

---

---

---

## Testing Data

---

---

---

---

---

---

---

---



---

---

---

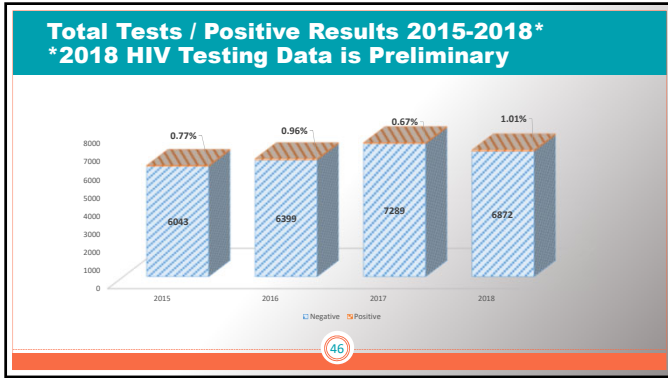
---

---

---

---

---




---

---

---

---

---

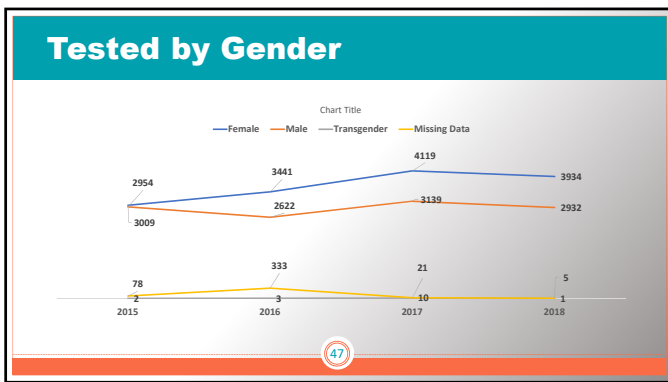
---

---

---

---

---




---

---

---

---

---

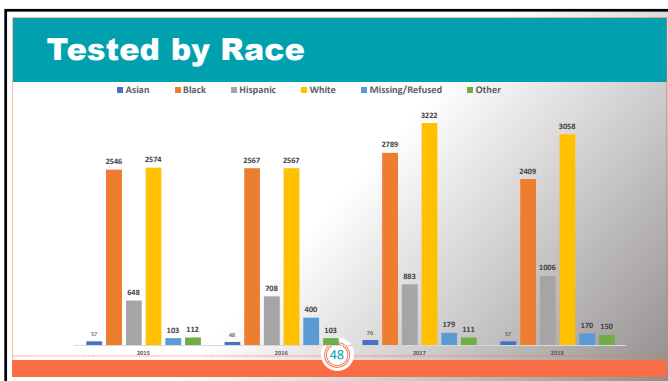
---

---

---

---

---




---

---

---

---

---

---

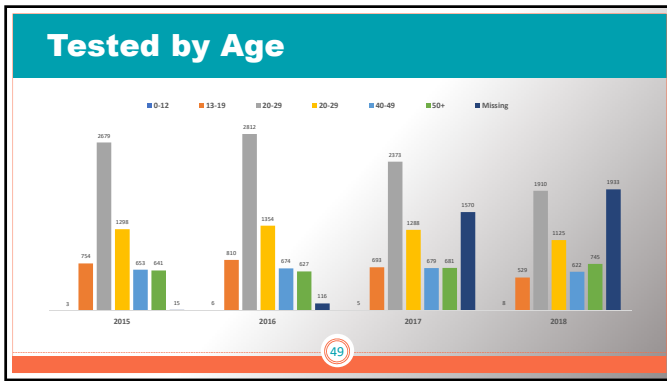
---

---

---

---






---

---

---

---

---

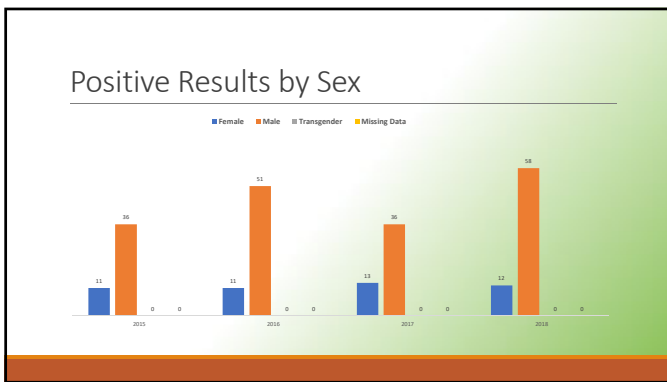
---

---

---

---

---




---

---

---

---

---

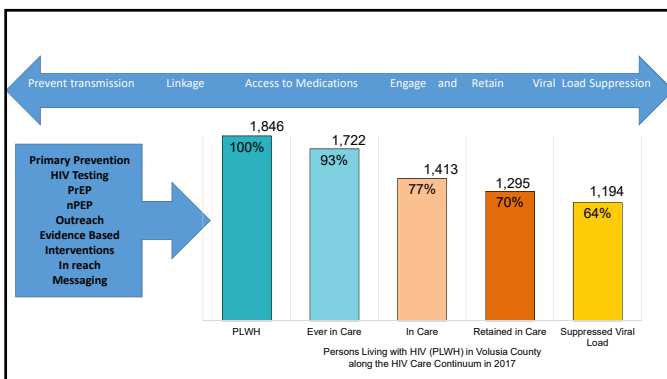
---

---

---

---

---




---

---

---

---

---

---

---

---

---

---

### Lead Agency Area 12

- Programmatic Services
- Fiscal Services
- PCHAP
- HOPWA

Housing Opportunities for People living with HIV/AIDS (HOPWA)

- Provides financial assistance for mortgage, rent and utilities
- Case management
- Must be Ryan White eligible to receive service
- Based on income (80% FPL)
- Must be able to provide a copy of lease or mortgage statement

52

---

---

---

---


---

---

---

---

### Lead Agency in Area 12



Ryan White Part B services include:

Core Medical Services	Support Services
• Ambulatory/Outpatient Services	• Case Management (non-medical)
• Oral Health Care	• Emergency Financial Assistance
• Local Pharmacy Assistance Program	• Food Vouchers
• Early Intervention Services	• Health Education/Risk Reduction
• Health Insurance Premiums and co-pays	• Housing
• Mental Health services	• Linguistic Services
• Nutrition	• Medical Transportation Services
• Medical Case Management	• Outreach Services
• Substance Abuse Services	• Psychological Support Services
• Outpatient	

53

---

---

---

---

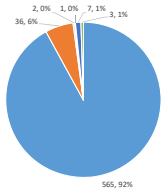
---

---

---

---

### Enrollment Status N=669



■ Active, Continuing in program	■ Referred to another Service
■ Removed due to violation of the rules	■ Incarcerated
■ Relocated	■ Deceased

54

---

---

---

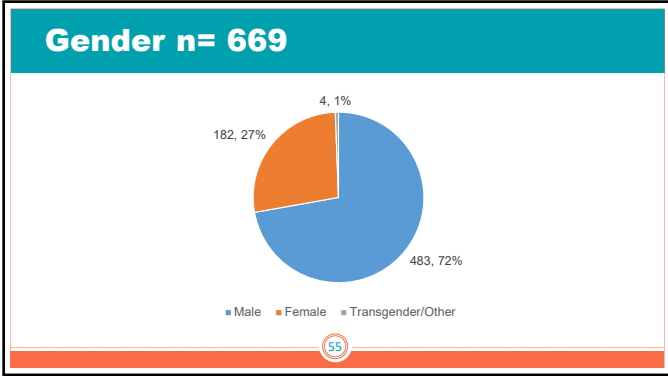
---

---

---

---

---



---

---

---

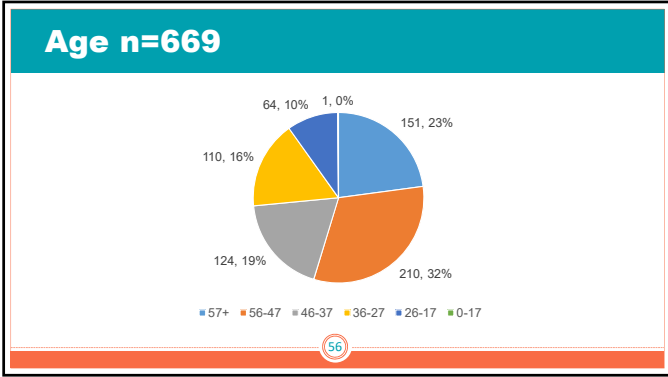
---

---

---

---

---



---

---

---

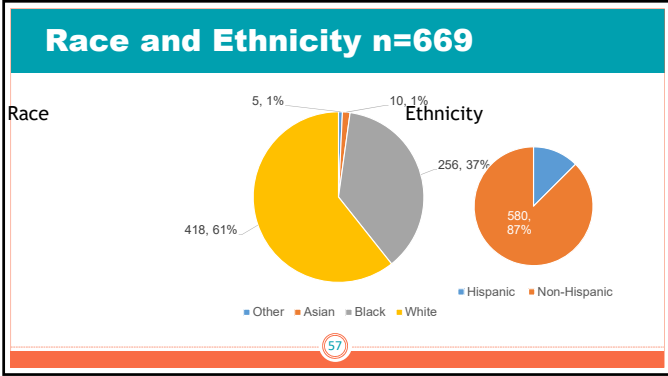
---

---

---

---

---



---

---

---

---

---

---

---

---

### Core Services Received N=495

	Clients	Visits	
Outpatient/Ambulatory	257	3,517	
Oral Health Care	163	430	
Mental Health	9	23	
Medical Nutrition Therapy	12	14	
Medical Case Management	349	2,365	

58

---

---

---

---

---

---

---

---

### Support Services Received N=495

	Visits	
AIDS Pharma Assistance	97	
Health Insurance	292	
Non-Medical Case Management	583	
Emergency Financial Assistance	45	
Food Vouchers	371	
Linguistics	1	
Transportation (Bus Passes)	59	

59

---

---

---

---

---

---

---

---


### Some Useful Links

Department of Health, HIV Section Website  
<http://www.floridahealth.gov/diseases-and-conditions/aids/surveillance/index.html>

CDC HIV Surveillance Reports (State and Metro Data):  
<http://www.cdc.gov/hiv/stats/haerlink.htm>

MMWR (Special Articles on Diseases, Including HIV):  
<http://www.cdc.gov/mmwr/>

U.S. Census Data (Available by State, County):  
<http://www.census.gov>



Division of Disease Control and Health Protection

60

---

---

---

---

---

---

---

---