


**State of the HIV Epidemic in Florida, 2019**

Gay Koehler-Sides  
HIV/AIDS Program Coordinator  
Data as of 6/30/2020



---

---

---

---

---

---


---

---

**Objectives**

- 🦏 The participant will be able to explain the pattern of HIV in the State of Florida.
- 🦏 The participant will be able to explain the pattern of HIV in the 3/13 service area.

2



---

---

---

---

---

---


---

---

**No Disclosures**

- 🦏 The presenter does not have any financial relationships with commercial entities to disclose.
- 🦏 The presenter will not discuss any off-label use or investigational product during the learning module.
- 🦏 This slide set has been peer-reviewed to ensure that there are no conflicts of interest represented in the presentation.

3



---

---

---

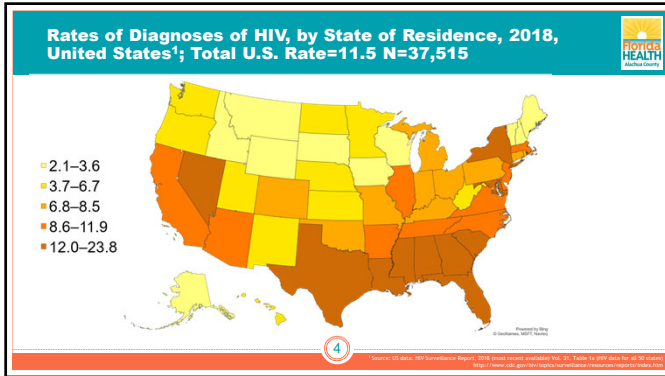
---

---

---

---

---




---

---

---

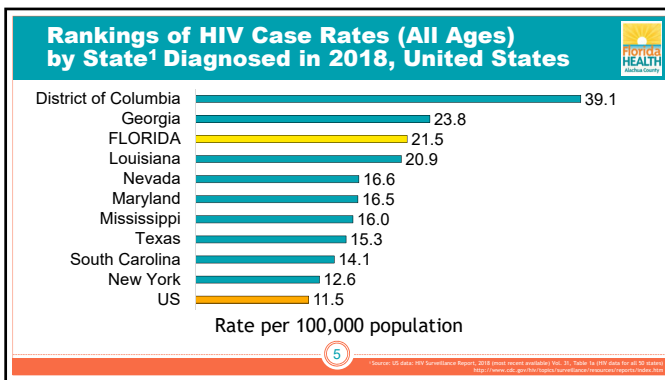
---

---

---

---

---




---

---

---

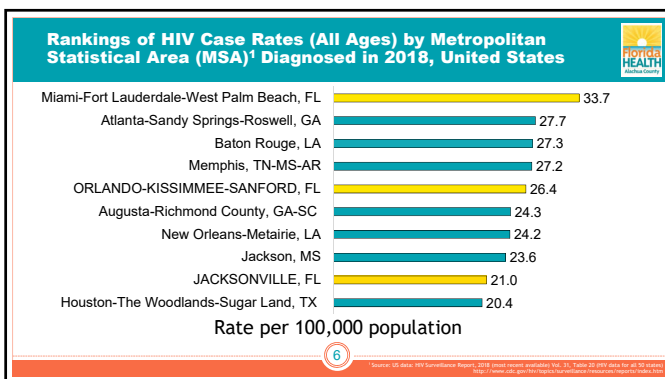
---

---

---

---

---




---

---

---

---

---

---

---

---

## Technical Notes



- ⚠ Unless otherwise noted, all data in this presentation are as of 06/30/2020.
- ⚠ Each year, the HIV data for the previous calendar year and all previous years are finalized and frozen for reporting purposes on June 30. The frozen data are used in all data reports until the following June 30, when the continuously deduplicated HIV/AIDS data set will be finalized and frozen again.
- ⚠ Unless otherwise noted, population-related data are provided by Florida CHARTS as of 06/30/2020.

7

---

---

---

---

---

---

---

---

## Technical Notes, Continued



- ⚠ HIV-related deaths represent persons with an HIV diagnosis who resided in Florida at death and whose underlying cause of death was HIV, regardless of whether their HIV status was reported in Florida.
- ⚠ Sexually transmitted disease (STD) data are provided by the STD & Viral Hepatitis Section as of 06/10/2020.
- ⚠ Tuberculosis (TB) data are provided by the TB Section as of 06/09/2020.
- ⚠ Hepatitis B (HBV) and Hepatitis C (HCV) data, which includes both acute & chronic cases reported in MERLIN are provided by the Epidemiology Section as of 06/30/2020.

8

---

---

---

---

---

---

---

---

## Technical Notes, Continued



- ⚠ HIV diagnoses by year represent persons whose HIV was diagnosed in that year, regardless of AIDS status at time of diagnosis.
- ⚠ AIDS and HIV diagnoses by year are not mutually exclusive and cannot be added together.
- ⚠ HIV prevalence data represent persons with HIV (PWH) living in Florida through the end of the calendar year (regardless of where they were diagnosed).

9

---

---

---

---


---

---

---

---

### Technical Notes, Continued



- ✘ Adult diagnoses represent people ages 13 and older; pediatric diagnoses represent people under the age of 13.
  - ✘ For data by the age is by age at diagnosis.
  - ✘ For prevalence data, the age is by current age at the end of the most recent calendar year, regardless of age at diagnosis.
- ✘ Unless noted, Whites are non-Hispanic/Latinx, Blacks are non-Hispanic/Latinx, and other (which may be omitted in some graphs due to small numbers) represents Asians, American Indians, and/or people of mixed races.
- ✘ For diagnosis data by year, area and county data excludes Department of Corrections diagnoses. For prevalence data, area and county data does **not** exclude Department of Corrections data.

10

---

---

---

---

---

---


---

---

---

---

### Definitions of Mode of Exposure Categories



- ✘ **MMSC:** Male-to-male sexual contact; these data exclude transgender persons who were assigned male at birth
- ✘ **IDU:** Injection drug use
- ✘ **MMSC/IDU:** Male-to-male sexual contact and injection drug use; these data exclude transgender persons who were assigned male at birth
- ✘ **Transgender Sexual Contact:** Transgender men or women whose mode of exposure was sexual contact
- ✘ **Heterosexual:** Heterosexual contact with person(s) who received an HIV diagnosis or had a known HIV risk; these data exclude transgender persons
- ✘ **Other Risk:** Includes hemophilia, transfusion, perinatal and other pediatric risks, and other confirmed risks

11

---

---

---

---

---

---


---

---

---

---

### Total Population and Persons with an HIV Diagnosis (PWH)<sup>1</sup> Living in Florida



	2018	2019	Percent Change
<b>Total Population and Persons with an HIV Diagnosis (PWH) Living in Florida</b>			
Population	20,957,705	21,268,553	1.5%
PWH	116,058	116,689	0.5%
<b>Strategic Long-Term Goals</b>			
Reduce the annual HIV diagnosis rate per 100,000	23.4	22.7	-3.0%
Increase the percent of persons diagnosed with HIV linked to care in 30 days	81.2%	82.2%	1.2%
Increase the percent of PWH retained in care	72.1%	72.2%	0.1%
Increase the percent of PWH with a suppressed viral load	66.3%	67.9%	2.4%
Reduce the annual number of babies born in Florida with perinatally acquired HIV to fewer than 5	9	0	N/A
<b>Additional Indicators</b>			
Reduce annual AIDS diagnosis rate per 100,000	9.2	8.8	-4.3%
Reduce the annual number of HIV-related deaths	665	644	-3.2%

12

<sup>1</sup>Persons Living with HIV (PLWH), Total Population and PLWH are based on data as of 6/30/2020.  
 Strategic Long-Term Goals and Additional Indicators are based on known numbers as of June 2019 for each consecutive year.

---

---

---

---

---

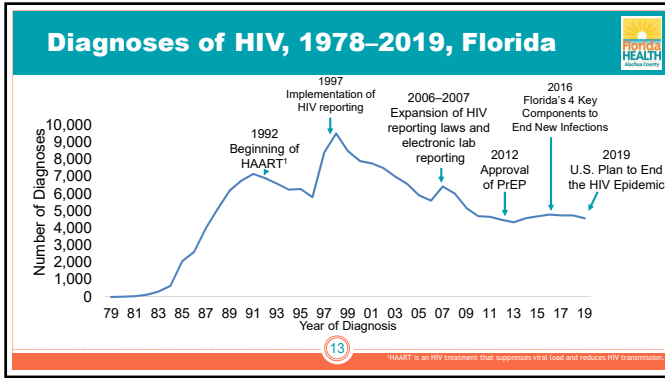
---

---

---

---

---




---

---

---

---

---

---

---

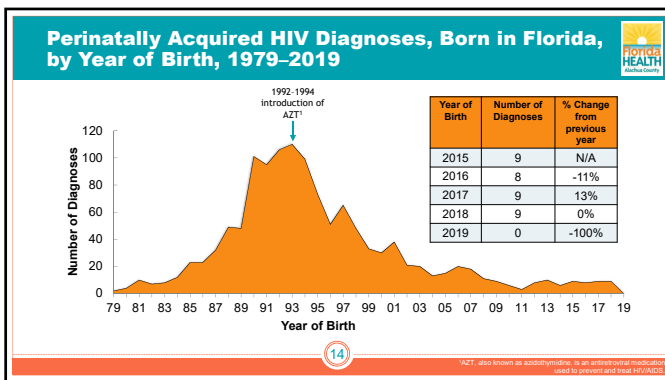
---

---

---

---

---




---

---

---

---

---

---

---

---

---

---

---

---

### Adult (Age 13+) with an HIV Diagnosis with a co-occurring Diagnosis of an STD<sup>1</sup>, by Type and Year of STD Report, 2015–2019, Florida

Year of STD Report	HIV/Early Syphilis <sup>2</sup>	HIV/Chlamydia	HIV/Gonorrhea
2015	2,220	1,574	1,749
2016	2,415	1,843	2,031
2017	2,458	2,247	2,433
2018	3,131	2,647	2,835
2019	3,291	3,257	3,821
Percent Change	48%	107%	118%

<sup>1</sup>Sexually transmitted disease (STD)

<sup>2</sup>Early syphilis (primary, secondary, and late primary and secondary)

---

---

---

---

---

---

---

---


---

---

---

---

### 2019 Congenital Syphilis by County<sup>1</sup>



Florida - 146 Cases

Miami-Dade	23	Volusia	5	Polk	1
Duval	17	Leon	4	Santa Rosa	1
Broward	14	Lee	3	Saint Johns	1
Orange	12	Pasco	2	Columbia	1
Hillsborough	10	Saint Lucie	2	Okaloosa	1
Palm Beach	9	Clay	2	Gadsden	1
Manatee	7	Osceola	2	Levy	1
Pinellas	6	Marion	1	Jackson	1
Brevard	6	Alachua	1		
Sarasota	5	Bay	1		
Putnam	5	Indian River	1		

16

Source: STARS as of 8/31/2019

---

---

---

---

---

---


---

---

---

---

### Adult (Age 13+) HIV Diagnoses with TB<sup>1</sup> by Year of TB Report<sup>2</sup>, 2015-2019, Florida



Years of TB Report	TB/HIV
2015	61
2016	66
2017	58
2018	53
2019	51
Percent Change	-16%

17

<sup>1</sup>Tuberculosis (TB)  
Source: eSRIS as of 6/30/2019

---

---

---

---

---

---


---

---

---

---

### One-In-Statements for Adults (Age 13+) with HIV Living in Florida, Year-end 2019



- 🦏 One in 157 adults in Florida were living with HIV
- 🦏 One in 308 Whites were living with HIV
- 🦏 One in 52 Blacks were living with HIV
- 🦏 One in 160 Hispanics/Latinxs were living with HIV

18

---

---

---

---

---

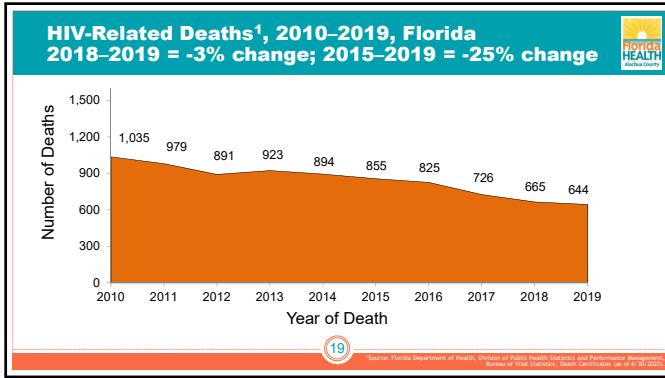
---

---

---

---

---




---

---

---

---

---

---

---

---

---

---

### HIV Care Continuum Definitions

- Persons with HIV:** The number of persons living in Florida with an HIV diagnosis (PWH) at the end of 2019, from data as of 6/30/2020
- In Care:** PLWH with at least one documented VL or CD4 lab, medical visit, or prescription from 1/1/2019 through 3/31/2020
- Retained in Care:** PLWH with two or more documented VL or CD4 labs, medical visits, or prescriptions at least three months apart from 1/1/2019 through 6/30/2020
- Suppressed Viral Load:** PLWH with a suppressed VL (<200 copies/mL) on the last VL from 1/1/2019 through 3/31/2020

20

---

---

---

---

---

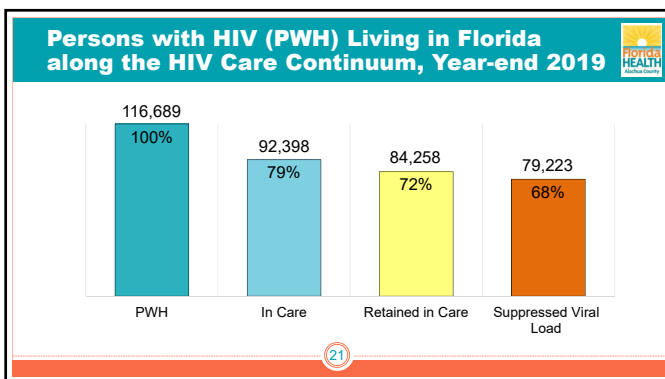
---

---

---

---

---




---

---

---

---

---

---

---

---

---

---

### National Ending the HIV Epidemic (EHE) Strategies

**GOAL:** HHS will work with each community to establish local teams on the ground to tailor and implement strategies to:

- 75% reduction in new HIV infections in 5 years and at least 90% reduction in 10 years.**
- Diagnose** all people with HIV as early as possible after infection.
- Treat** the infection rapidly and effectively to achieve sustained viral suppression.
- Protect** people at risk for HIV using potent and proven prevention interventions, including PrEP, a medication that can prevent HIV infections.
- Respond** rapidly to detect and respond to growing HIV clusters and prevent new HIV infections.

HIV HealthForce will establish local teams committed to the success of the Initiative in each jurisdiction.

22

---

---

---

---

---

---

---

---

---

---

### National Ending the HIV Epidemic (EHE) Strategies

48 Highest Burden Counties, D.C., San Juan and 7 states with substantial HIV rural burden

HIV Diagnosis Rate per 100,000 Population  
State Rate=21.6

0.0
0.1-7.5
7.6-12.1
12.2-17.0
17.1-41.7

Source: Florida Department of Health, HIV/AIDS Section (as of 8/30/2019). Data compiled by FloridaHIV.org

23

---

---

---

---

---

---

---

---

---

---

### Persons with HIV (PWH), Living in Florida by County of Residence, Year-End 2019<sup>1</sup>

PWH Rate per 100,000 Population

7 EHE <sup>2</sup> Counties	Number of PWH	PWH Rate
MIAMI-DADE CO.	27,319	965.2
BROWARD CO.	20,507	1064.2
ORANGE CO.	9,273	667.5
PALM BEACH CO.	8,259	566.2
HILLSBOROUGH CO.	7,412	512.9
DUVAL CO.	6,489	667.7
PINELLAS CO.	4,853	495.4

State Rate=548.6

0.0
0.1-214.6
214.7-288.5
288.6-495.4
495.5-1,864.2

Source: Florida Department of Health, HIV/AIDS Section (as of 8/30/2019). <sup>1</sup>Ending the HIV Epidemic (EHE)

24

---

---

---

---

---

---

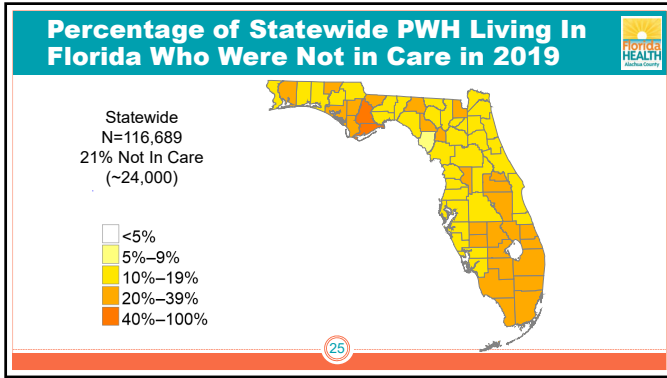
---

---

---

---






---

---

---

---

---

---

---

---

- ### Florida’s Plan to Eliminate HIV Transmission and Reduce HIV-related Deaths
- ✘ Implement routine HIV and Sexually Transmitted Infections (STIs) screening in health care settings and priority testing in non-health care settings
  - ✘ Provide rapid access to treatment and ensure retention in care (Test and Treat)
  - ✘ Improve and promote access to antiretroviral pre-exposure prophylaxis (PrEP) and non-occupational post-exposure prophylaxis (nPEP)
  - ✘ Increase HIV awareness and community response through outreach, engagement, and messaging
- 26

---

---

---

---

---

---

---

---

## HIV Epidemiology In Area 3

Alachua, Bradford, Columbia, Dixie, Gilchrist, Hamilton, Lafayette, Levy, Putnam, Suwannee and Union Counties  
(Excluding Department of Corrections)  
Data as of 6/30/2020

---

---

---

---

---

---

---

---

### Total Population and Persons Living with HIV (PWH)<sup>1</sup> in Area 3

	2018	2019	Percent Change
<b>Total Population and Persons with an HIV Diagnosis (PWH) Living in Area 3</b>			
Population	594,881	599,149	0.7%
PWH	2,563	2,519	-1.7%
<b>Strategic Long-Term Goals</b>			
Reduce the annual HIV diagnosis rate per 100,000	14.0	10.7	-23.6%
Increase the percent of persons diagnosed with HIV linked to care in 30 days	90.4	90.6	0.2%
Increase the percent of PWH retained in care	79.8%	80.0%	0.2%
Increase the percent of PWH with a suppressed viral load	71.8%	74.4%	1.6%
Reduce the annual number of babies born in Florida with perinatally acquired HIV to fewer than 5	1	0	
<b>Additional Indicators</b>			
Reduce annual AIDS diagnosis rate per 100,000	9.2	5.2	-43.5%
Reduce the annual number of HIV-related deaths	18	20	11.1%

28 Persons Living with HIV (PWH), Total Population and PLWH are based on data as of 6/30/2019

---

---

---

---

---

---

---

---

---

---

### HIV Cases by Year of Diagnosis

29

---

---

---

---

---

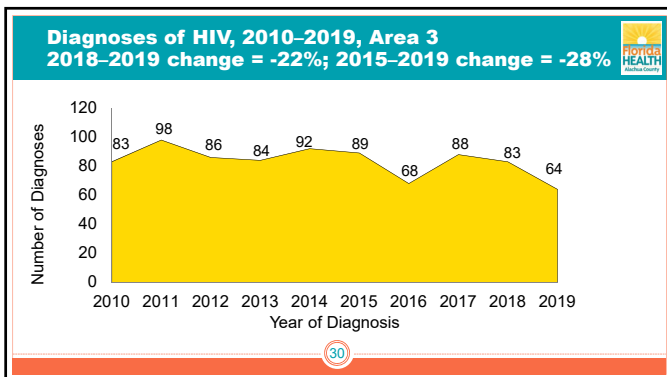
---

---

---

---

---



---

---

---

---

---

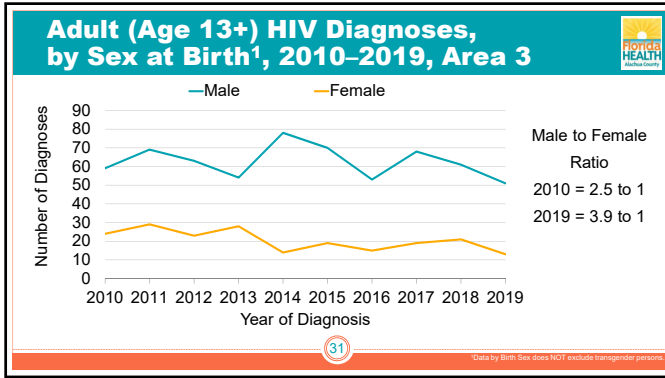
---

---

---

---

---




---

---

---

---

---

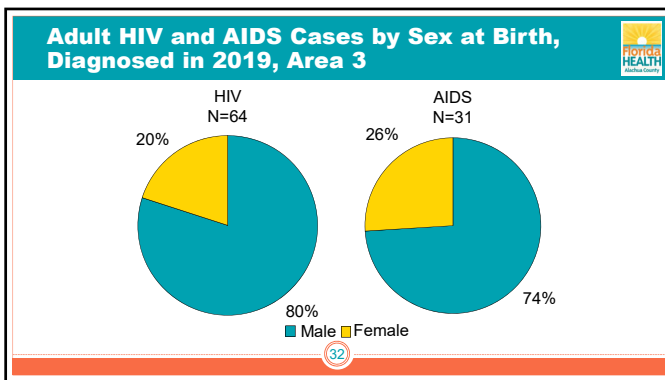
---

---

---

---

---




---

---

---

---

---

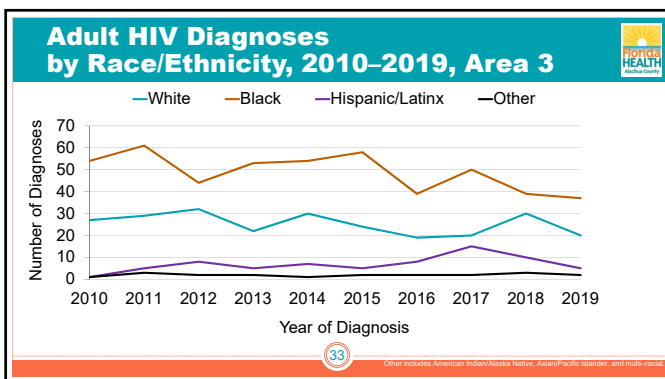
---

---

---

---

---




---

---

---

---

---

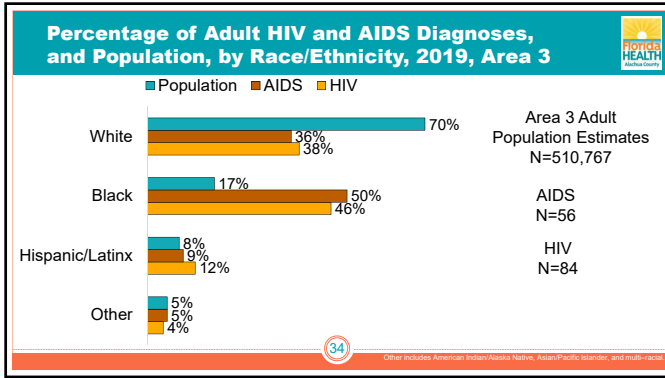
---

---

---

---

---




---

---

---

---

---

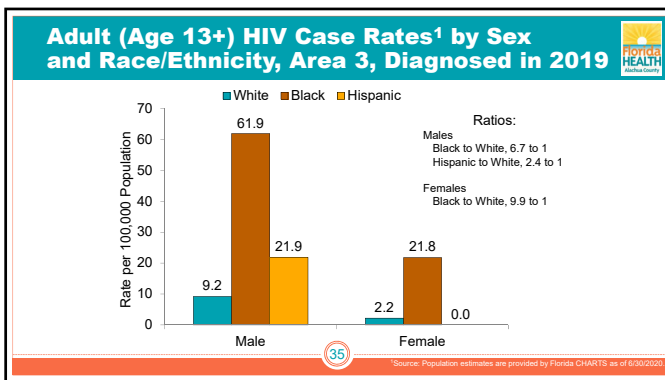
---

---

---

---

---




---

---

---

---

---

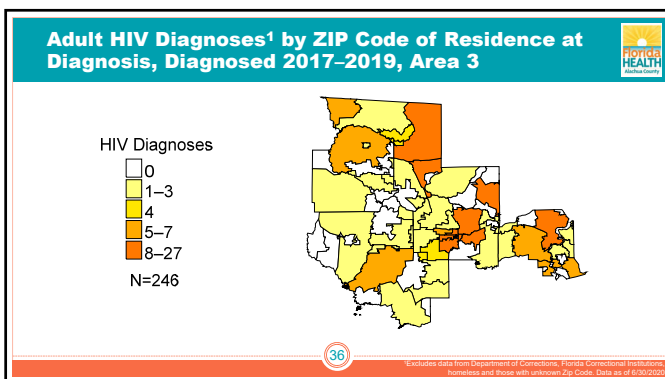
---

---

---

---

---




---

---

---

---

---

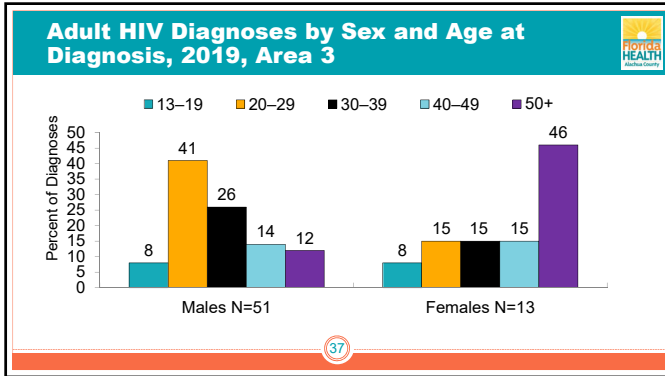
---

---

---

---

---




---

---

---

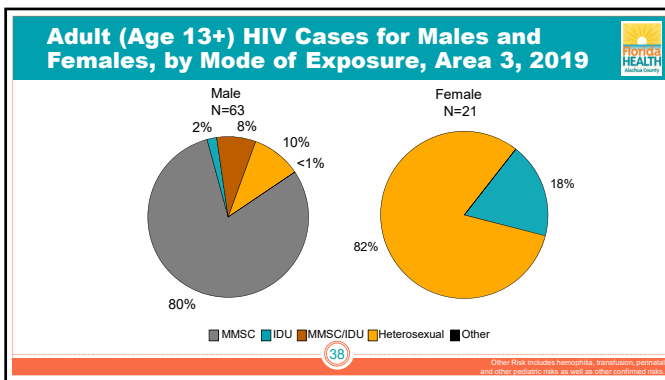
---

---

---

---

---




---

---

---

---

---

---

---

---

## Co-Morbidity Data in Area 3

39

---

---

---

---


---

---

---

---

**Adult (Age 13+) HIV Diagnoses with a Co-occurring Diagnosis of an STD<sup>1</sup>, by Type and Year of STD Report, 2015–2019, Area 3**



Year of STD Report	HIV/ Early Syphilis <sup>2</sup>	HIV/ Chlamydia	HIV/ Gonorrhea
2015	32	25	20
2016	37	23	30
2017	33	27	29
2018	42	24	30
2019	49	31	37
<b>Percent Change</b>	53%	24%	85%

40

<sup>1</sup>Sexually transmitted disease (STD)  
<sup>2</sup>Early syphilis (primary, secondary, and late primary/late secondary)

---

---

---

---

---


---

---

---

---

**Adult (Age 13+) HIV Diagnoses with TB<sup>1</sup> by Year of TB Report<sup>2</sup>, 2015–2019, Area 3**



Years of TB Report	TB/HIV
2015	2
2016	0
2017	0
2018	1
2019	0

41

<sup>1</sup>Tuberculosis (TB)  
<sup>2</sup>Source: surveillance of HIV/AIDS

---

---

---

---

---

---

---

---

---

**HIV Prevalence in Area 3**

42

---

---

---

---

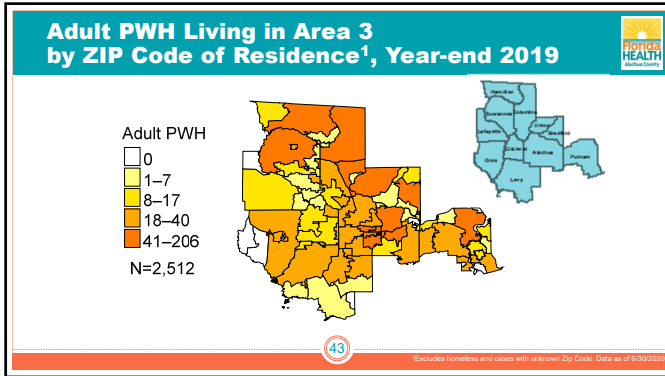
---

---

---

---

---



---

---

---

---

---

---

---

---

### One-In-Statements for Adults (Age 13+) Living with HIV in Area 3, Year-end 2019

- One in 205 adults in Area 3 were known to be living with HIV
- One in 439 Whites were living with HIV
- One in 59 Blacks were living with HIV
- One in 244 Hispanics were living with HIV

44

---

---

---

---

---

---

---

---

### HIV Care In Area 3

45

---

---

---

---


---

---

---

---

### HIV Care Continuum Definitions



- ✘ **PWH:** The number of persons with HIV living in Florida at the end of 2019
- ✘ **In Care:** PWH with at least one documented viral load (VL) or CD4 lab, medical visit, or prescription from 1/1/2019 through 3/31/2020
- ✘ **Retained in Care:** PWH with two or more documented VL or CD4 labs, medical visits, or prescriptions at least three months apart from 1/1/2019 through 6/30/2020
- ✘ **Suppressed Viral Load:** PWH with a suppressed VL (<200 copies/mL) on the last VL from 1/1/2019 through 3/31/2020

46

---

---

---

---

---

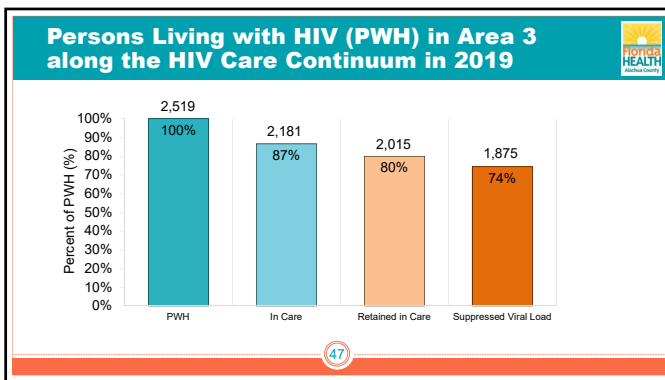
---

---

---

---

---




---

---

---

---

---

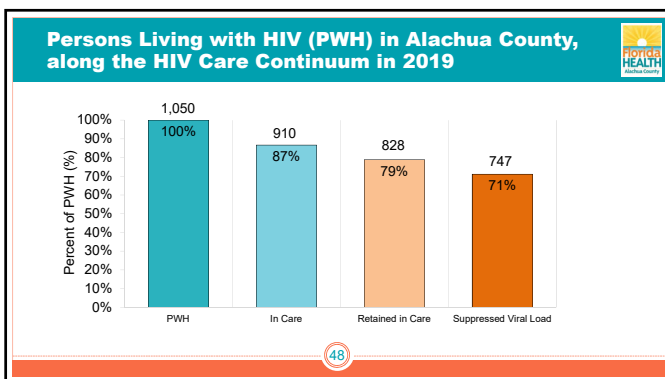
---

---

---

---

---




---

---

---

---

---

---

---

---

---

---



Florida HEALTH FLORIDA HEALTH DEPARTMENT

## HIV-Related Deaths In Area 3

49

---

---

---

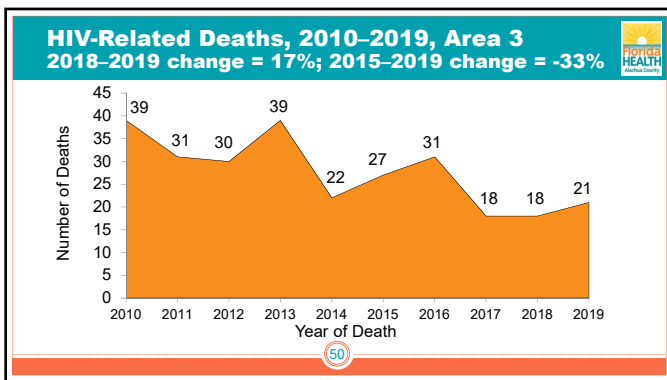
---

---

---

---

---



---

---

---

---

---

---

---

---

Florida HEALTH FLORIDA HEALTH DEPARTMENT

## HIV Prevention for Area 3

51

---

---

---

---

---

---

---

---

### Florida's Top Priority Populations Definitions

**Primary HIV Prevention**

- These data were calculated from HIV diagnoses 2017–2019 and represent the proportion of each race/mode of exposure group to the total diagnoses.
- These data are useful to prevent new HIV diagnoses among affected demographic groups.

**Prevention for PWH**

- These data were calculated from PWH living in Florida at year-end 2019 and represent the proportion of each race/mode of exposure group to the total PWH.
- These data are useful to prevent HIV through care services provided to PWH in these demographic groups.

52

---

---

---

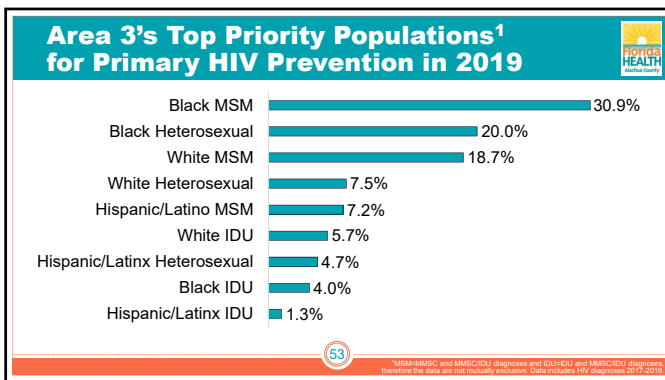
---

---

---

---

---




---

---

---

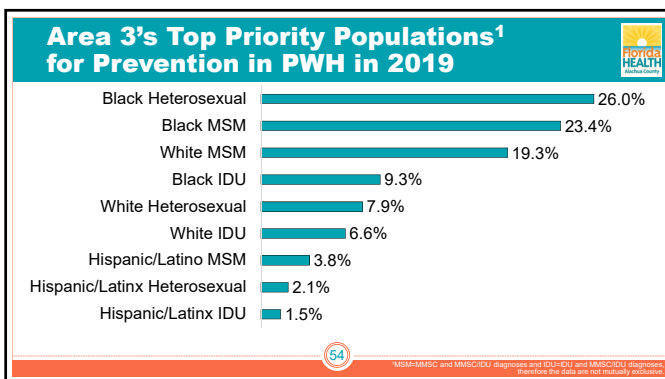
---

---

---

---

---




---

---

---

---


---

---

---

---

# HIV Epidemiology In Area 13



Citrus, Lake, Marion and Sumter Counties  
(Excluding Department of Corrections)  
Data as of 6/30/2020

---

---

---

---


---

---

---

---

## Total Population and Persons Living with HIV (PWH)<sup>1</sup> in Area 13



	2018	2019	Percent Change
<b>Total Population and Persons with an HIV Diagnosis (PWH) Living in Area 13</b>			
Population	968,624	992,967	2.5%
PWH	2,704	2,709	0.2%
<b>Strategic Long-Term Goals</b>			
Reduce the annual HIV diagnosis rate per 100,000	10.2	8.9	-12.7%
Increase the percent of persons diagnosed with HIV linked to care in 30 days	88.9%	80.7%	-8.2%
Increase the percent of PWH retained in care	77.6%	77.3%	-0.3%
Increase the percent of PWH with a suppressed viral load	70.7%	73.6%	2.9%
Reduce the annual number of babies born in Florida with perinatally acquired HIV to fewer than 5	0	0	N/A
<b>Additional Indicators</b>			
Reduce annual AIDS diagnosis rate per 100,000	4.9	4.4	-10.2%
Reduce the annual number of HIV-related deaths	26	19	-26.9%

56 Persons Living with HIV (PLWH), Total Population and PLWH are based on data as of 6/30/2020.

---

---

---

---


---

---

---

---

## HIV Cases by Year of Diagnosis



57

---

---

---

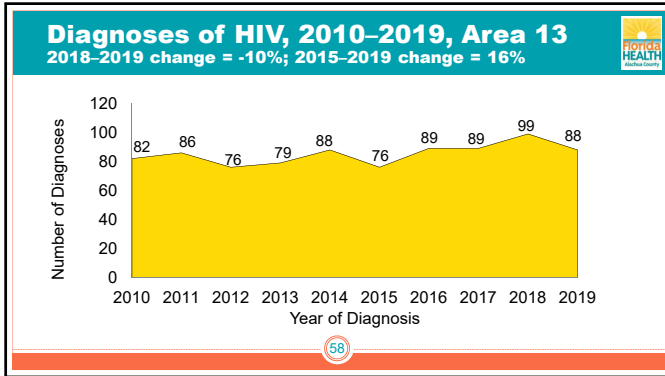
---

---

---

---

---




---

---

---

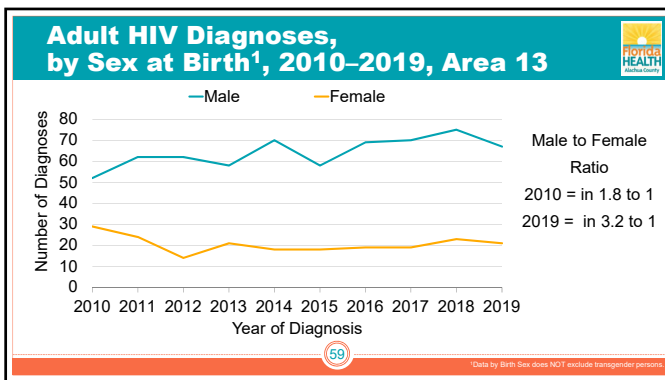
---

---

---

---

---




---

---

---

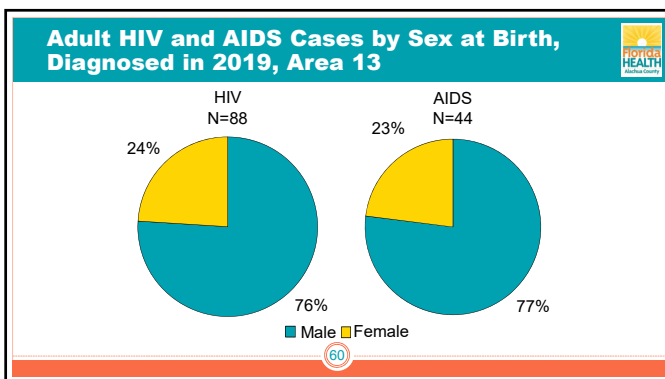
---

---

---

---

---




---

---

---

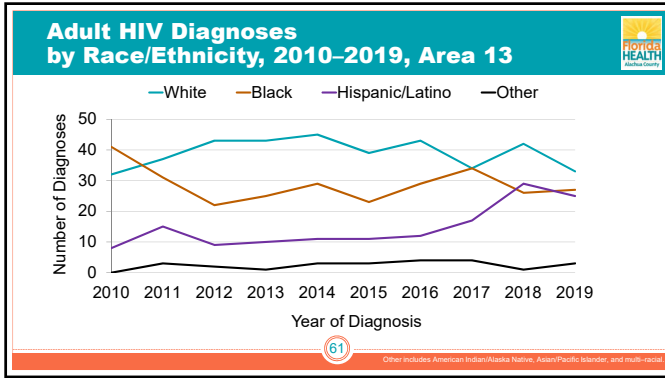
---

---

---

---

---




---

---

---

---

---

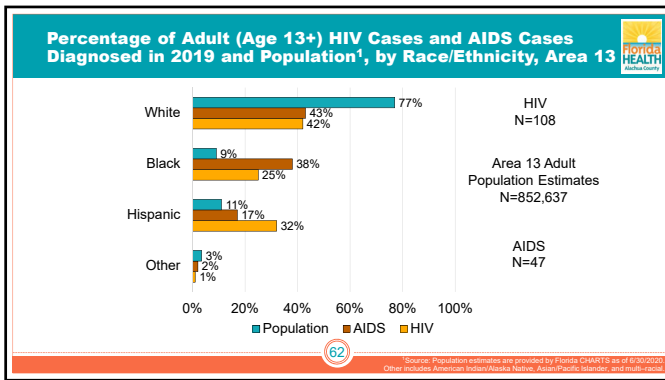
---

---

---

---

---




---

---

---

---

---

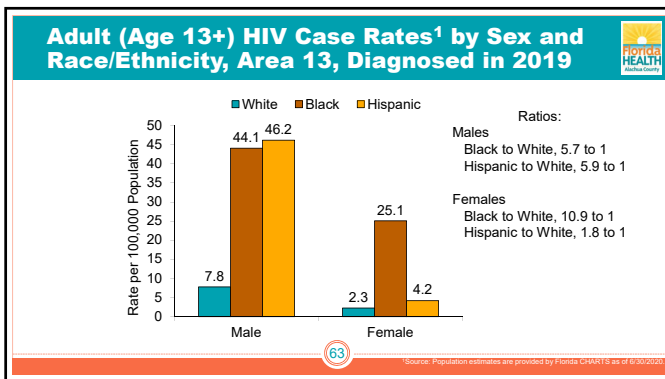
---

---

---

---

---




---

---

---

---

---

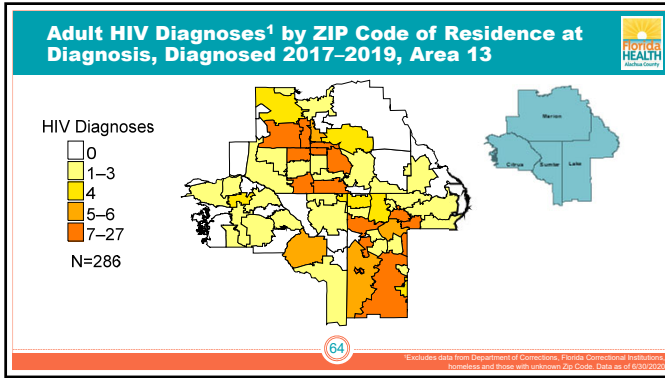
---

---

---

---

---




---

---

---

---

---

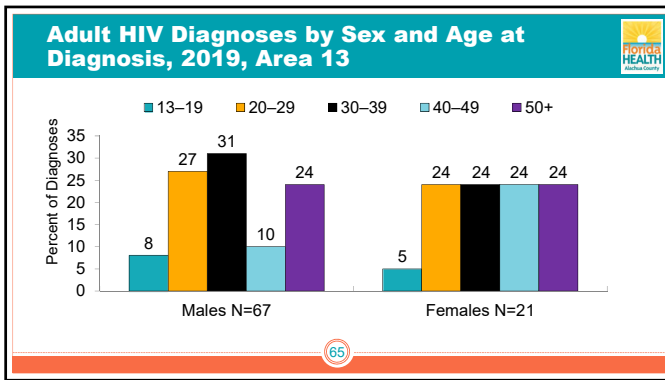
---

---

---

---

---




---

---

---

---

---

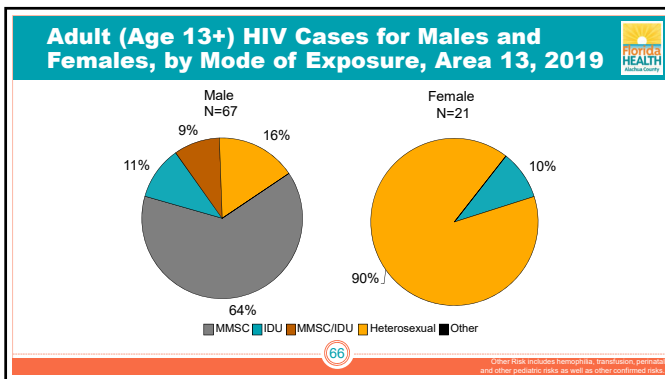
---

---

---

---

---




---

---

---

---

---


---

---

---

---

---



## Co-Morbidity Data in Area 13

67

---

---

---


---

---

---

---

---



### Adult (Age 13+) HIV Diagnoses with a Co-occurring Diagnosis of an STD<sup>1</sup>, by Type and Year of STD Report, 2015–2019, Area 13

Year of STD Report	HIV/ Early Syphilis <sup>2</sup>	HIV/ Chlamydia	HIV/ Gonorrhea
2015	22	26	15
2016	23	27	20
2017	26	24	23
2018	48	40	41
2019	37	48	52
<b>Percent Change</b>	68%	85%	247%

68

<sup>1</sup>Sexually transmitted disease (STD)  
<sup>2</sup>Early syphilis (primary, secondary, and late primary non-organoid)

---

---

---


---

---

---

---

---



### Adult (Age 13+) HIV Diagnoses with TB<sup>1</sup> by Year of TB Report<sup>2</sup>, 2015–2019, Area 13

Years of TB Report	TB/HIV
2015	1
2016	1
2017	0
2018	2
2019	0

69

<sup>1</sup>Tuberculosis (TB)  
<sup>2</sup>Source: annualized as of 6/30/2020

---

---

---

---

---

---

---

---

Florida HEALTH FLORIDA HEALTH DEPARTMENT

## HIV Prevalence in Area 13

70

---

---

---

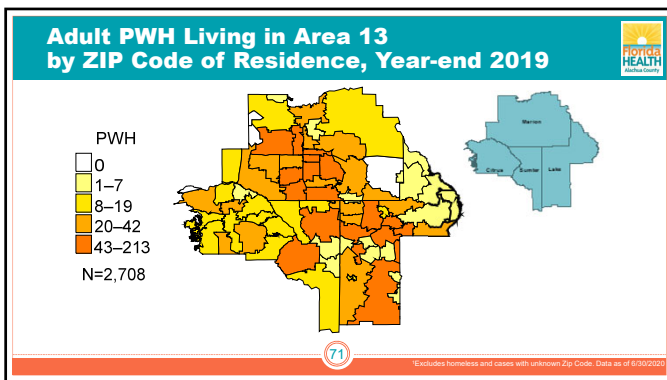
---

---

---

---

---



---

---

---

---

---

---

---

---

### One-In-Statements for Adults (Age 13+) Living with HIV in Area 13, Year-end 2019

Florida HEALTH FLORIDA HEALTH DEPARTMENT

- One in 323 adults in Area 13 were known to be living with HIV
- One in 559 Whites were living with HIV
- One in 80 Blacks were living with HIV
- One in 213 Hispanics were living with HIV

72

---

---

---

---

---

---

---

---



HIV Care  
In Area 13

# HIV Care In Area 13

73

---

---

---

---

---

---

---

---

HIV Care Continuum Definitions

- ✘ **PWH:** The number of persons with HIV living in Florida at the end of 2019
- ✘ **In Care:** PWH with at least one documented viral load (VL) or CD4 lab, medical visit, or prescription from 1/1/2019 through 3/31/2020
- ✘ **Retained in Care:** PWH with two or more documented VL or CD4 labs, medical visits, or prescriptions at least three months apart from 1/1/2019 through 6/30/2020
- ✘ **Suppressed Viral Load:** PWH with a suppressed VL (<200 copies/mL) on the last VL from 1/1/2019 through 3/31/2020

74

---

---

---

---

---

---

---

---

Persons Living with HIV (PWH) in Area 13 along the HIV Care Continuum in 2019

Category	Count	Percent of PWH (%)
PWH	2,709	100%
In Care	2,311	85%
Retained in Care	2,095	77%
Suppressed Viral Load	1,995	74%

75

---

---

---

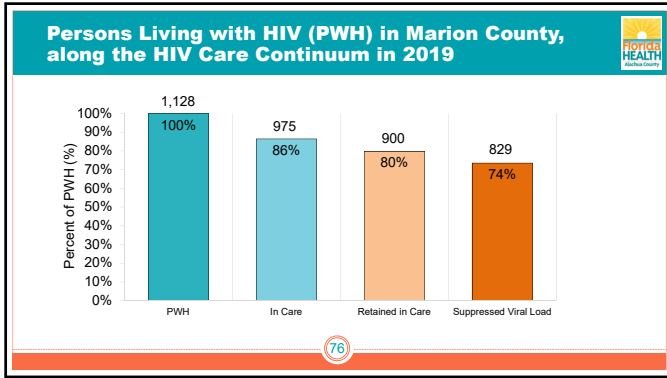
---

---

---

---

---



---

---

---

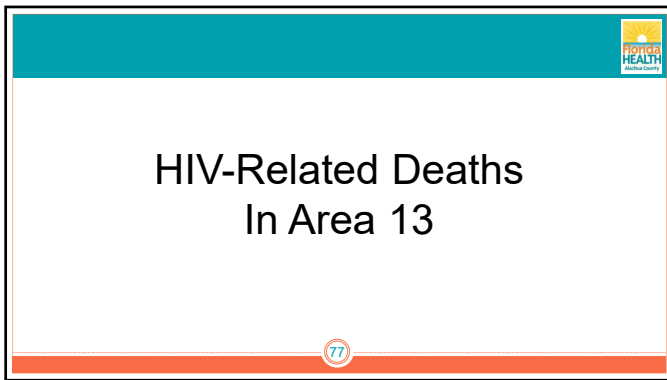
---

---

---

---

---



---

---

---

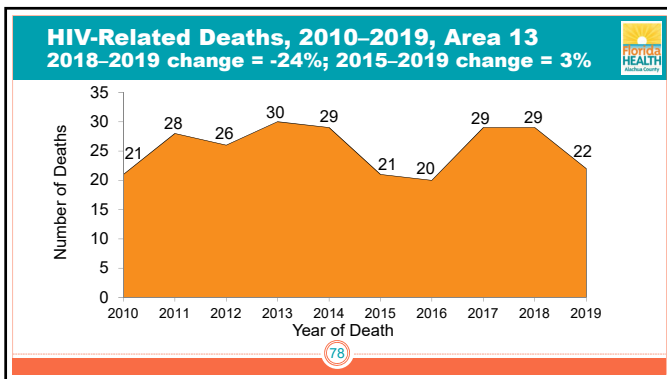
---

---

---

---

---



---

---

---

---

---

---

---

---

Florida HEALTH

## HIV Prevention for Area 13

79

---

---

---

---

---

---

---

---

Florida's Top Priority Populations Definitions

**⚡ Primary HIV Prevention**

- ⚡ These data were calculated from HIV diagnoses 2017–2019 and represent the proportion of each race/mode of exposure group to the total diagnoses.
- ⚡ These data are useful to prevent new HIV diagnoses among affected demographic groups.

**⚡ Prevention for PWH**

- ⚡ These data were calculated from PWH living in Florida at year-end 2019 and represent the proportion of each race/mode of exposure group to the total PWH.
- ⚡ These data are useful to prevent HIV through care services provided to PWH in these demographic groups.

80

---

---

---

---

---

---

---

---

Area 13's Top Priority Populations<sup>1</sup>  
for Primary HIV Prevention in 2019

White MSM	25.8%
Hispanic/Latino MSM	16.0%
Black MSM	15.6%
Black Heterosexual	15.1%
White Heterosexual	10.0%
Hispanic/Latinx Heterosexual	7.0%
White IDU	5.2%
Hispanic/Latinx IDU	3.2%
Black IDU	2.0%

81

<sup>1</sup>MSM=MSM and MSM/IDU diagnoses and IDU/IDU and MSM/IDU diagnoses. Because the data are not mutually exclusive, data includes HIV diagnoses 2017-2019.

---

---

---

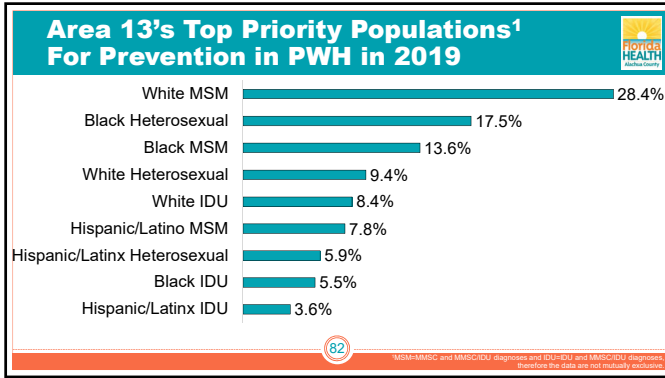
---

---

---

---

---




---

---

---

---

---

---

---

---

---

---

### Florida's Plan to Eliminate HIV Transmission and Reduce HIV-related Deaths

#### HIV Testing

Adolescents and adults (ages 13-64) should get tested for HIV at least once during their lifetime. Persons at **increased risk** for HIV should get tested at least annually. Visit [knowyourhivstatus.com](http://knowyourhivstatus.com) for testing options in your area.

**Florida law** requires all pregnant women to be tested for HIV and other sexually transmitted infections (STIs) at their initial prenatal care visit, again at 28-32 weeks, and at labor and delivery if their HIV status is unknown.

#### Antiretroviral Therapy (ART)

For persons with HIV (PWH), starting ART as soon as possible improves health outcomes and quality of life by reducing viral load and the risk of disease progression. PWH who take ART as prescribed and achieve and keep an undetectable viral load have effectively no risk of transmitting HIV to their HIV-negative sexual partners (Undetectable=Untransmittable). ART is recommended for all PWH, regardless of how long they've had the virus or how well they feel. To find a care provider or to learn more about the resources available to PWH, visit [floridaaids.org](http://floridaaids.org).

#### Pre-Exposure Prophylaxis (PrEP)

PrEP medication, taken as directed, can reduce the risk of acquiring HIV through sexual contact by over 90% and through injection drug use by 70%. Condoms are still important during sex to prevent other STIs and unwanted pregnancy. STIs are increasing in Florida and can increase HIV risk. To find a PrEP provider who can help you decide if PrEP is right for you, visit [prelocator.org](http://prelocator.org).

#### Florida HIV/AIDS Hotline

1-800-FLA-AIDS (352-2437) English  
 1-800-545-SIDA (545-7432) Spanish  
 1-800-AIDS-101 (243-7101) Haitian Creole  
 1-888-503-7118 Hearing/Speech Impaired  
 211bigend.org/flvaidshotline  
 Text 'FLHIV' or 'flv' to 898211

For more information, contact [DiseaseControl@flhealth.gov](mailto:DiseaseControl@flhealth.gov).

83

---

---

---

---

---

---

---

---

---

---

### Some Useful Links

Department of Health HIV/AIDS Section  
[floridaaids.org](http://floridaaids.org)

CDC HIV Surveillance Reports (State and Metro Data)  
[cdc.gov/hiv/library/reports/hiv-surveillance.html](http://cdc.gov/hiv/library/reports/hiv-surveillance.html)

CDC's Morbidity and Mortality Weekly Report (Special Articles on Diseases, including HIV)  
[cdc.gov/mmwr](http://cdc.gov/mmwr)

U.S. Census Data (Available by State and County)  
[census.gov](http://census.gov)

84

---

---

---

---

---

---

---

---

---

---

**Area 3 Surveillance Contacts:  
Department of Health in Alachua County**



Richard Willis, Field Surveillance Staff  
Phone: 352-334-7968  
Email: [Richard.Willis@flhealth.gov](mailto:Richard.Willis@flhealth.gov)

Gay Koehler-Sides, HIV/AIDS Program Coordinator  
Phone: 352-334-7965  
Email: [Gay.Koehler-Sides@flhealth.gov](mailto:Gay.Koehler-Sides@flhealth.gov)

HIV/AIDS surveillance data are frozen on June 30 for the previous calendar year.  
These are the same data used for Florida CHARTS and all grant-related data.  
<http://www.flhealthcharts.com/charts/CommunicableDiseases/>

---

---

---

---

---

---

---

---