

Epidemiology of HIV in Florida and Area 1, 2022

DEPARTMENT OF HEALTH

HIV/AIDS Section
Bureau of Communicable Diseases
Division of Disease Control and Health
Protection



Data as of 6/30/2023

1

DISCLOSURES



- *This program is supported by the Health Resources and Services Administration (HRSA) of the U.S. Department of Health and Human Services (HHS) under grant number U1OHA30535 as part of an award totaling \$4.2m. The contents are those of the author(s) and do not necessarily represent the official views of, nor an endorsement, by HRSA, HHS, or the U.S. Government. For more information, please visit HRSA.gov.*
- *“Funding for this presentation was made possible by cooperative agreement U1OHA30535 from the Health Resources and Services Administration HIV/AIDS Bureau. The views expressed do not necessarily reflect the official policies of the Department of Health and Human Services nor does mention of trade names, commercial practices, or organizations imply endorsement by the U.S. Government. Any trade/brand names for products mentioned during this presentation are for training and identification purposes only.”*
- *This content is owned by the AETC, and is protected by copyright laws. Reproduction or distribution of the content without written permission of the sponsor is prohibited, and may result in legal action.*

Florida
HEALTH

2

2

AETC Program National Centers and HIV Curriculum

- **National Coordinating Resource Center** – serves as the central web –based repository for AETC Program training and capacity building resources; its website includes a free virtual library with training and technical assistance materials, a program directory, and a calendar of trainings and other events. Learn more: <https://aidsetc.org/>
- **National Clinician Consultation Center** – provides free, peer-to-peer, expert advice for health professionals on HIV prevention, care, and treatment and related topics. Learn more: <https://nccc/ucsf.edu>
- **National HIV Curriculum** – provides ongoing, up –to-date HIV training and information for health professionals through a free, web –based curriculum; also provides free CME credits, CNE contact hours, CE contact hours, and maintenance of certification credits. Learn more: www.hiv.uw.edu



3

3

Acronyms

- 🧡 **HIV:** Human Immunodeficiency Virus
- 🧡 **AIDS:** Acquired Immune Deficiency Syndrome
- 🧡 **CDC:** Centers for Disease Control and Prevention
- 🧡 **CHD:** County Health Department
- 🧡 **EHE:** Ending the HIV Epidemic



4

4

Acronyms, continued

- 🚫 **IDU:** Injection Drug Use
- 🚫 **MMSC:** Male-to-Male Sexual Contact
- 🚫 **MMSC/IDU:** Male-to-male sexual contact and injection drug use.
- 🚫 **MSM:** Men Who Have Sex with Men
- 🚫 **nPEP:** Non-Occupational Post-Exposure Prophylaxis
- 🚫 **PEP:** Post-Exposure Prophylaxis
- 🚫 **PrEP:** Pre-Exposure Prophylaxis

Acronyms, continued

- 🚫 **PWH:** Persons with HIV
- 🚫 **PWID:** Persons Who Inject Drugs
- 🚫 **STI:** Sexually Transmitted Infection
- 🚫 **TB:** Tuberculosis
- 🚫 **VL:** Viral Load

Technical Notes

- ⚠ Data for 2020 and 2021 should be interpreted with caution due to the impact of a public health emergency on HIV testing, care-related services, and case surveillance activities in state and local jurisdictions.
- ⚠ Unless otherwise noted, all data in this presentation are as of 6/30/2023.

Technical Notes, continued

- ⚠ Each year, the HIV data for the previous calendar year and all prior years back to 1979 are finalized and frozen for reporting purposes on June 30. The frozen data are used in all data reports until the following June 30, when the continuously deduplicated HIV/AIDS data set will be finalized and frozen again.
- ⚠ Unless otherwise noted, population-related data (such as rates) are provided by FLHealthCHARTS as of 6/30/2023.

Technical Notes, continued

- ⚡ HIV-related deaths represent persons with an HIV diagnosis in the CDC's enhanced HIV/AIDS Reporting System (eHARS) who resided in Florida at death and whose underlying cause of death was HIV, regardless of whether their HIV status was reported in Florida.
- ⚡ STI data are derived from the Surveillance Tools and Reporting System (STARS) and provided by the STD Prevention and Control Section as of 7/1/2023.

Technical Notes, continued

- ⚡ HIV diagnoses by year represent persons whose HIV was diagnosed in that year, regardless of AIDS status at time of diagnosis.
- ⚡ AIDS and HIV diagnoses by year are not mutually exclusive and cannot be added together.

Technical Notes, continued

- 🦏 HIV prevalence data represent PWH living in Florida through the end of the calendar year, regardless of where they were diagnosed.
- 🦏 For diagnosis data over time, sub-geographical area data exclude Florida Department of Corrections (FDC) and Federal Correctional Institution (FCI) diagnoses. For prevalence data, area and county data include FDC and FCI data.

Technical Notes, continued

- 🦏 Adult diagnoses represent people ages 13 years and older; pediatric diagnoses represent people under the age of 13 years.
 - For data by year of diagnosis, age is by age at diagnosis.
 - For prevalence data, age is by current age at the end of the most recent calendar year, regardless of age at diagnosis.

Technical Notes, continued

- ⚡ Unless noted, White and Black people are non-Hispanic/Latino, and Other (which may be omitted in some graphs due to small numbers) represents American Indian/Alaska Native, Asian/Pacific Islander, or multi-racial.

Definitions of Mode of Exposure Categories

- ⚡ **Heterosexual:** Sexual contact between a male and female who received an HIV diagnosis or had a known HIV risk.
- ⚡ **Other Sexual Contact:** Other sexual contact resulting in a person acquiring HIV.
- ⚡ **Other Risk:** Includes recipients of clotting factor for hemophilia or other coagulation disorders, recipients of HIV-infected blood or blood components other than clotting factor or of HIV-infected tissue, perinatal and other pediatric risks, or other confirmed risks.

HIV Care Continuum Definitions

🧡 PWH: Persons with HIV living in Florida at the end of 2022.

🧡 In Care: PWH with at least one documented VL or CD4 lab, medical visit, or prescription from 1/1/2022 through 3/31/2023.

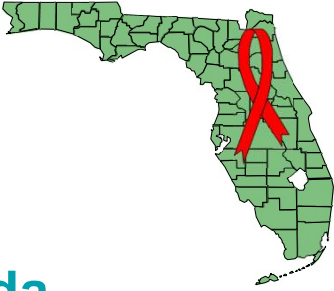
🧡 Retained in Care: PWH with two or more documented VL or CD4 labs, medical visits or prescriptions at least three months apart from 1/1/2022 through 6/30/2023.

HIV Care Continuum Definitions, continued

🧡 Suppressed Viral Load: PWH with a suppressed VL (<200 copies/mL) on their last VL lab from 1/1/2022 through 3/31/2023.

🧡 Not in Care: PWH with no documented VL or CD4 lab, medical visit or prescription from 1/1/2022 through 3/31/2023.

🧡 Linked to Care: PWH with at least one documented VL or CD4 lab, medical visit, or prescription following their first HIV diagnosis date.

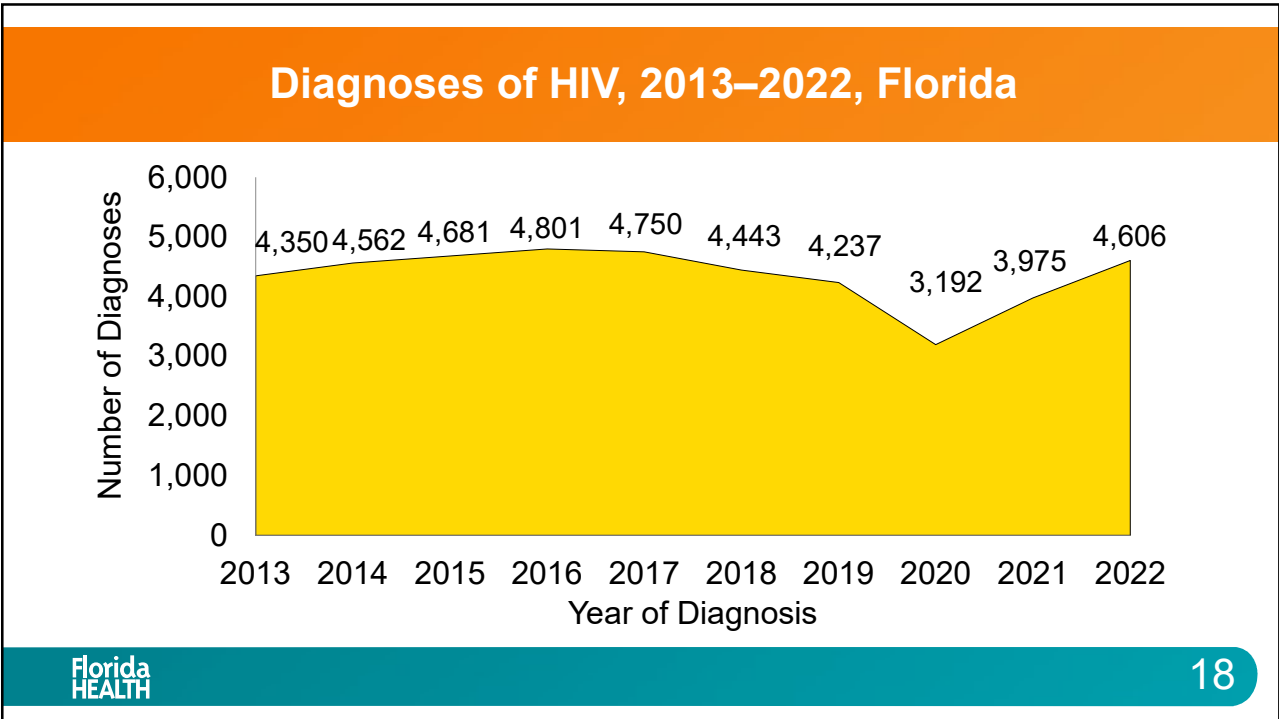


HIV Trends in Florida

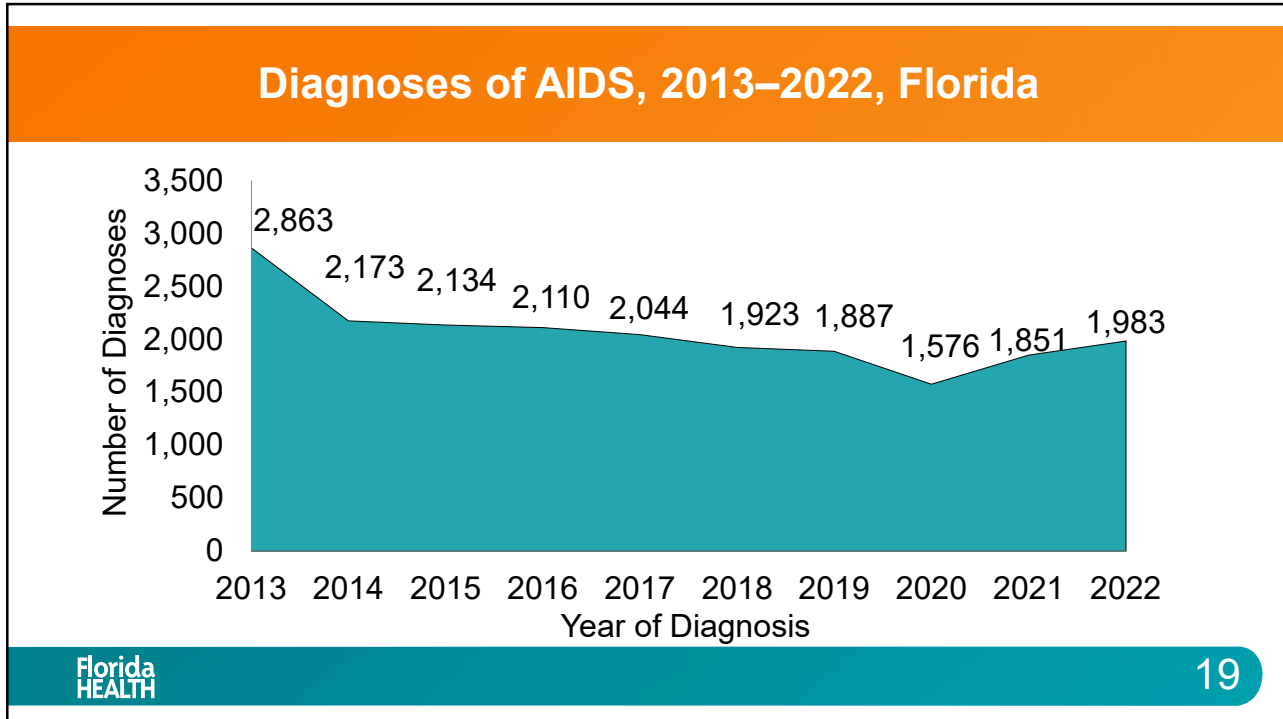
Florida HEALTH

17

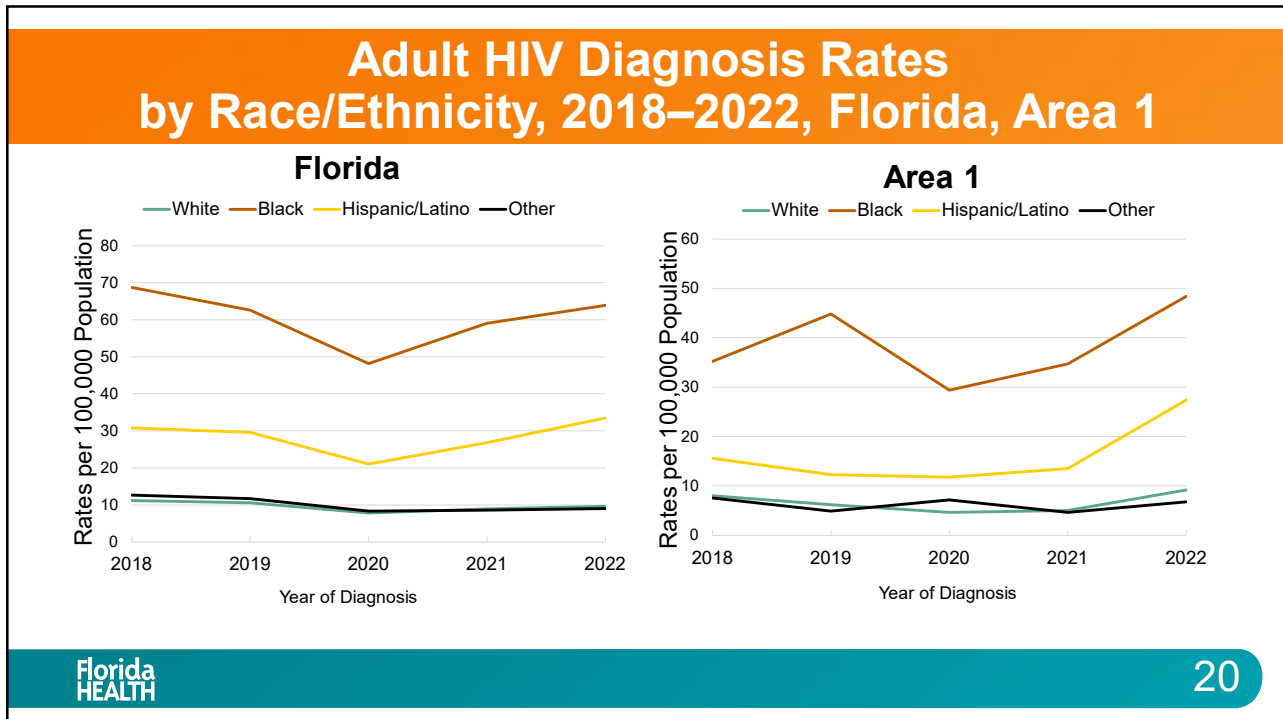
17



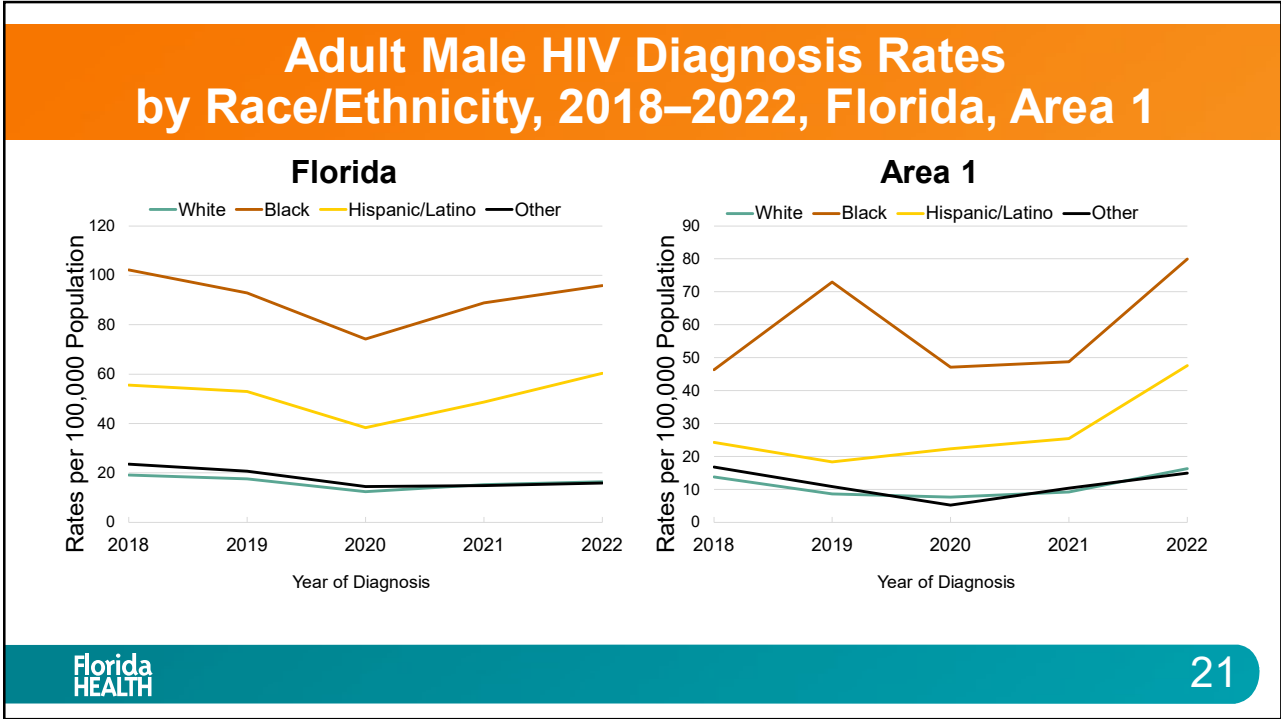
18



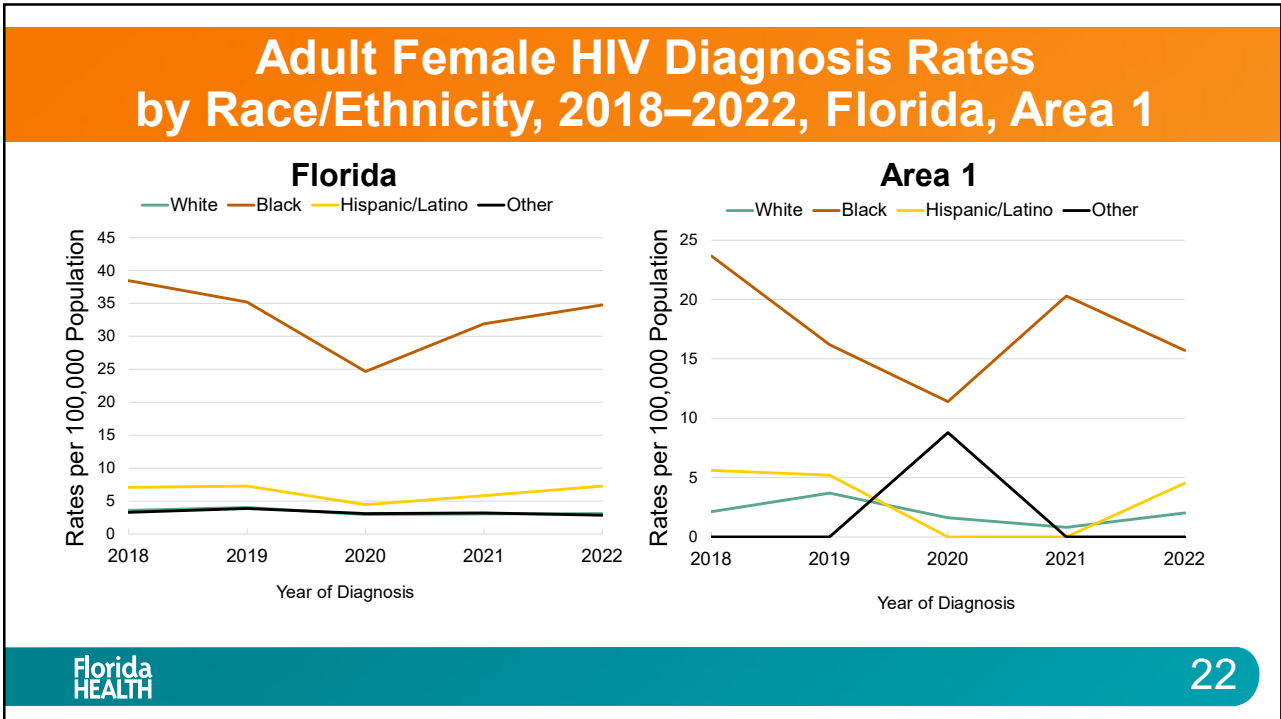
19



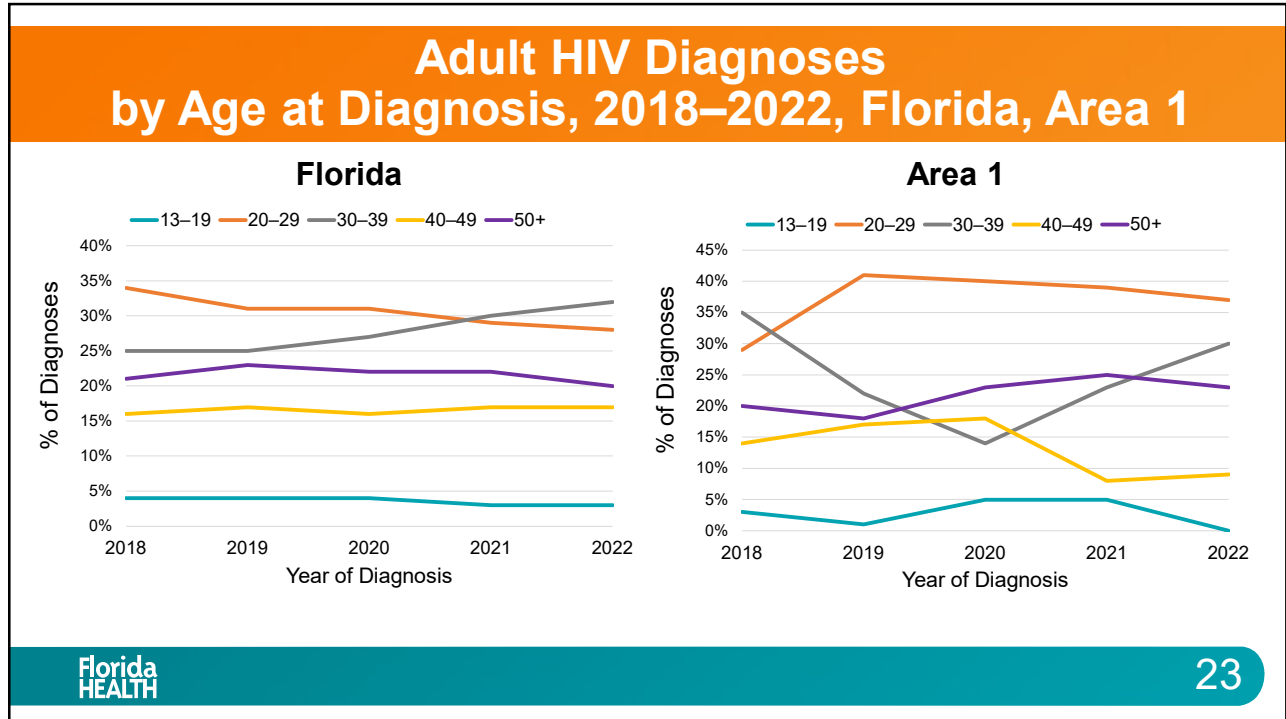
20



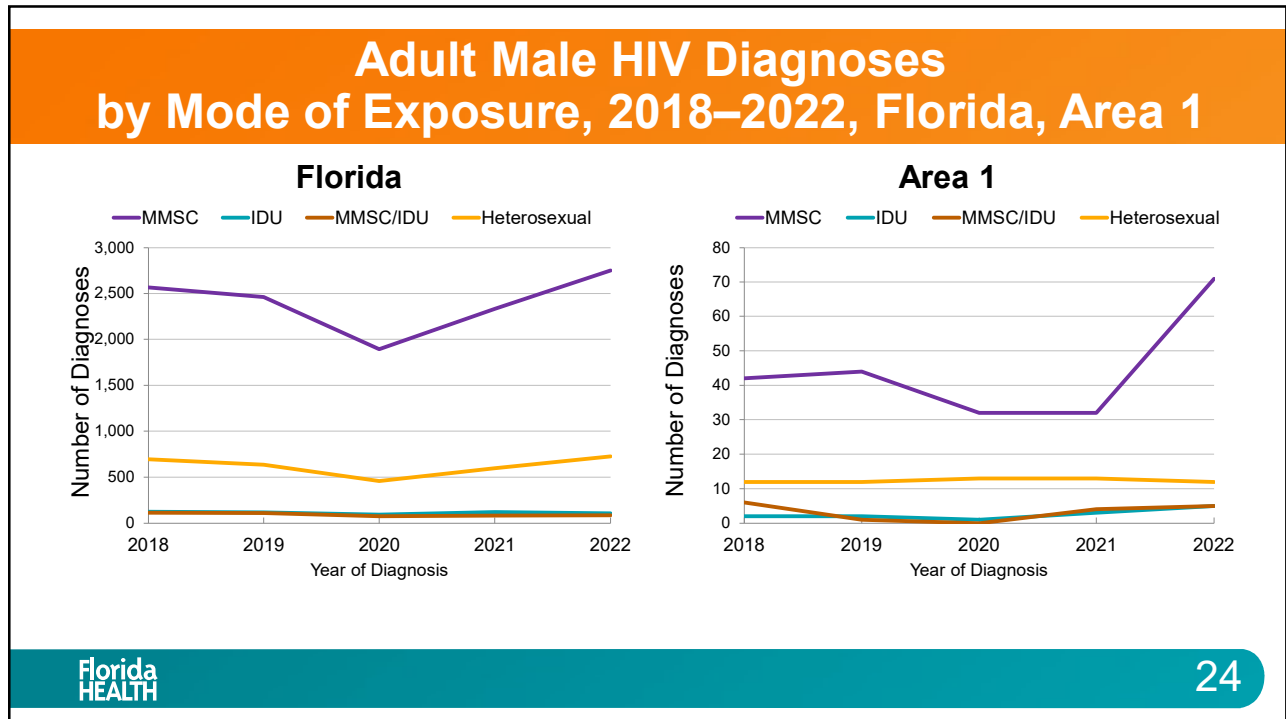
21



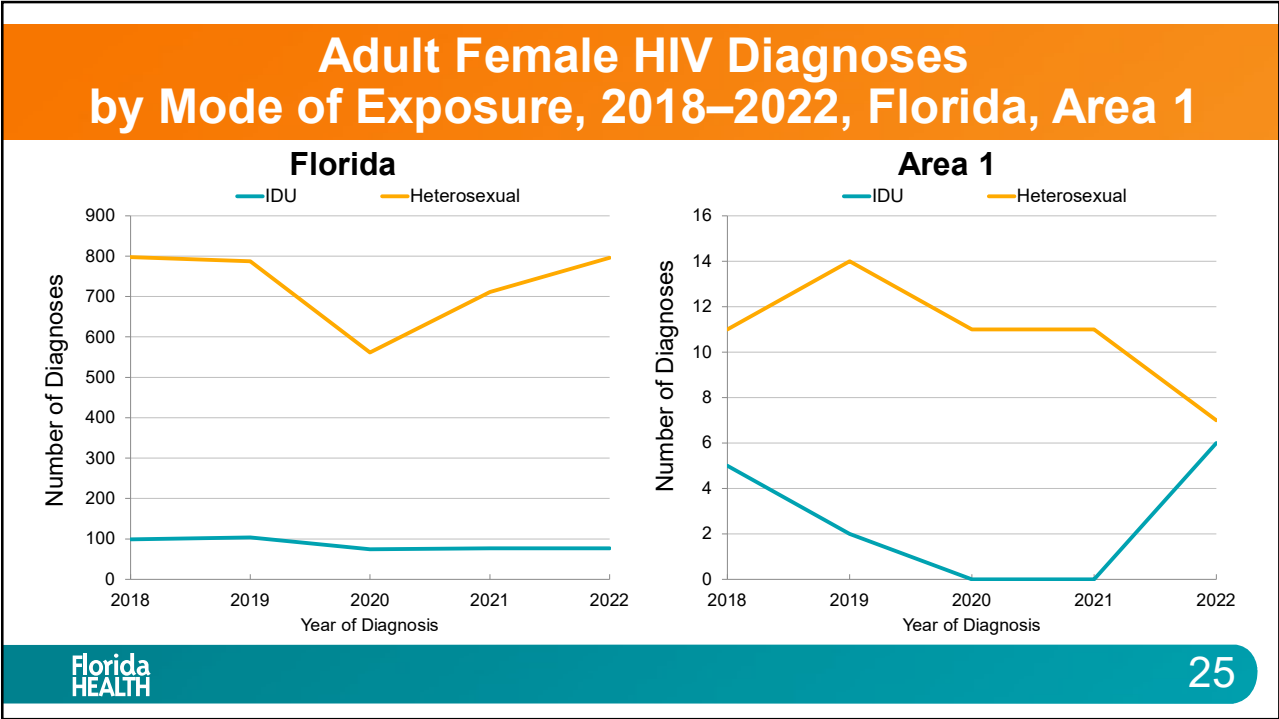
22



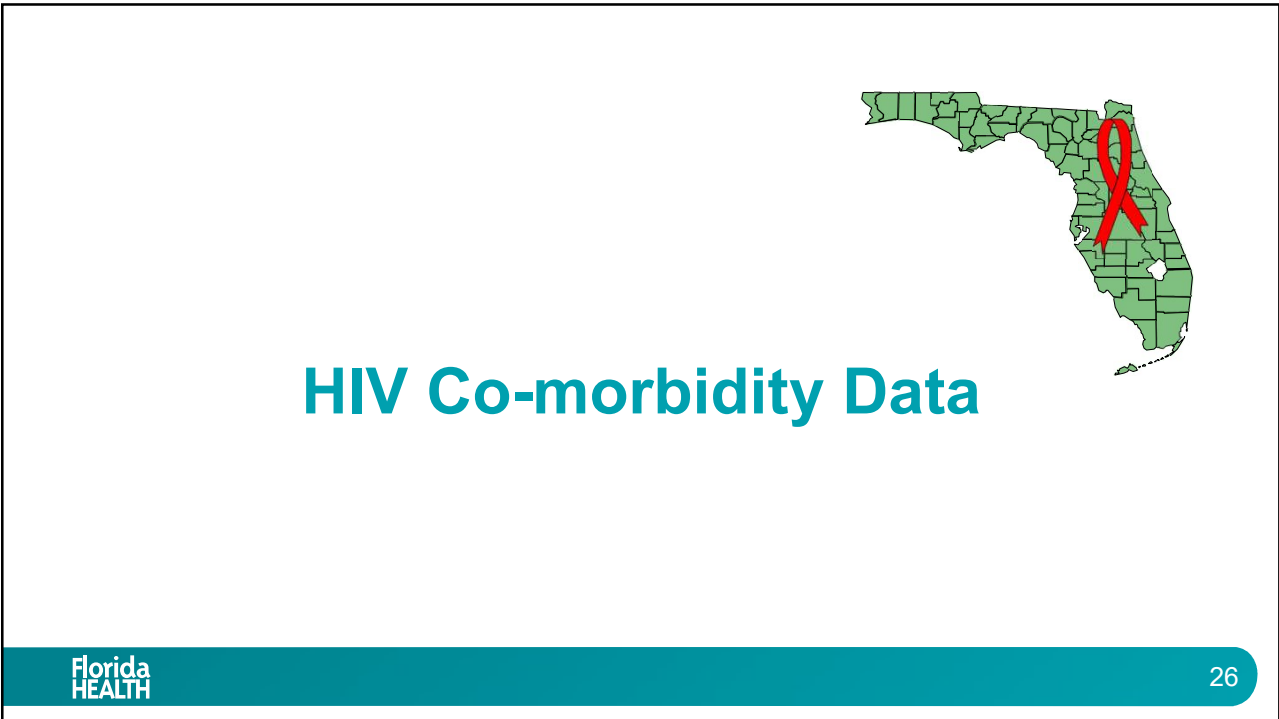
23



24



25

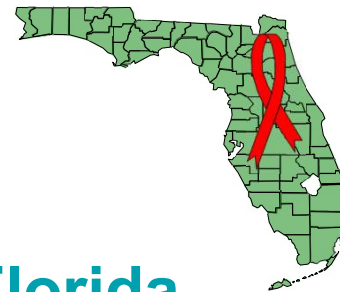


26

PWH with a Co-occurring Diagnosis of an STI by Type and Year of STI Report, 2018–2022, Florida

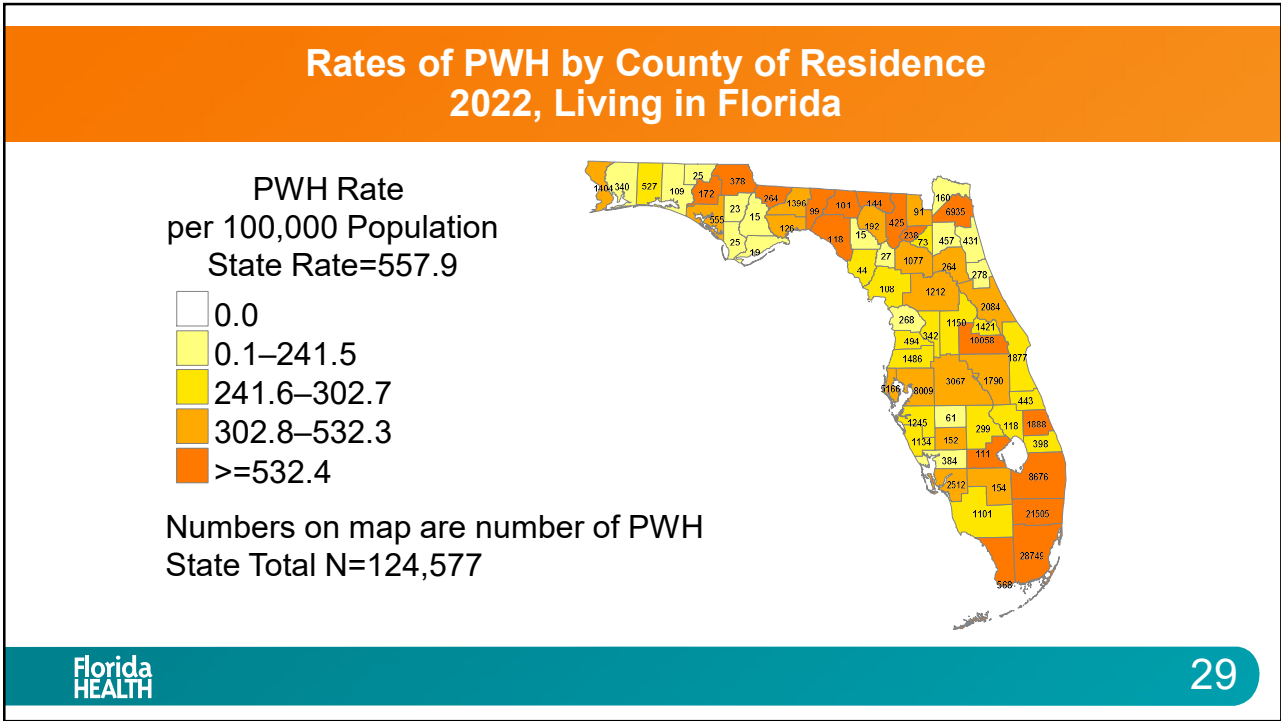
Year of STI Report	HIV/ Early Syphilis ¹	HIV/ Chlamydia	HIV/ Gonorrhea
2018	3,165	2,679	2,885
2019	3,339	3,322	3,915
2020	3,476	2,974	3,343
2021	4,376	3,896	4,133
2022	4,237	4,339	4,565
Percentage Change	+34%	+62%	+58%

27

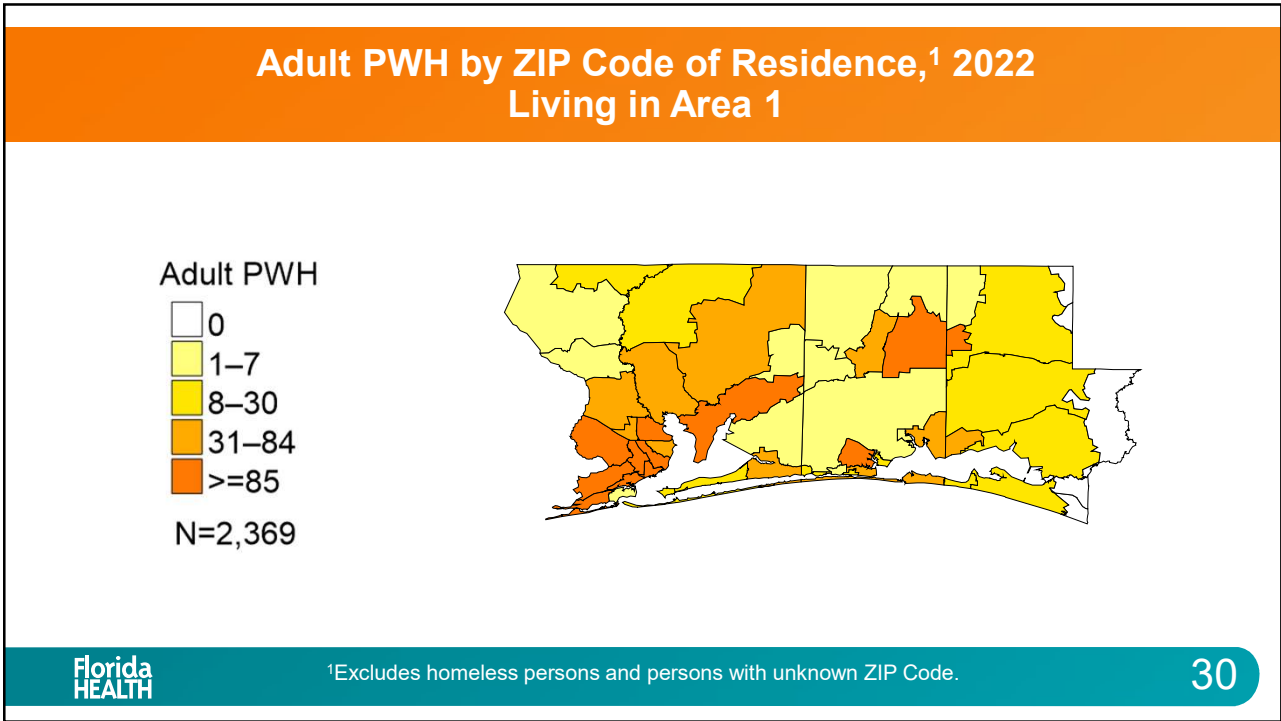


HIV Prevalence in Florida

28

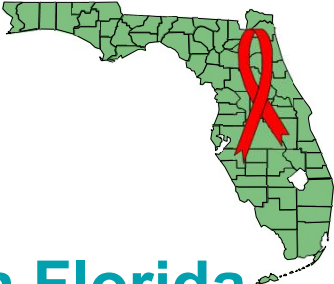


29



¹Excludes homeless persons and persons with unknown ZIP Code.

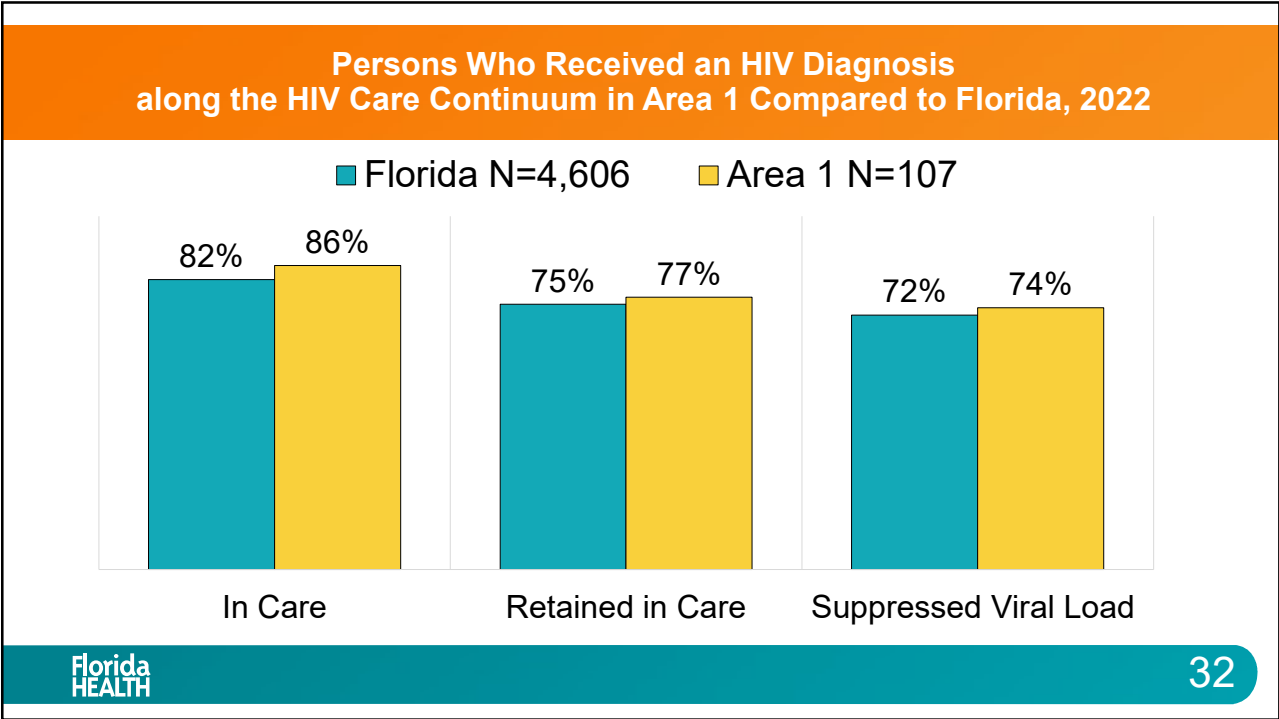
30



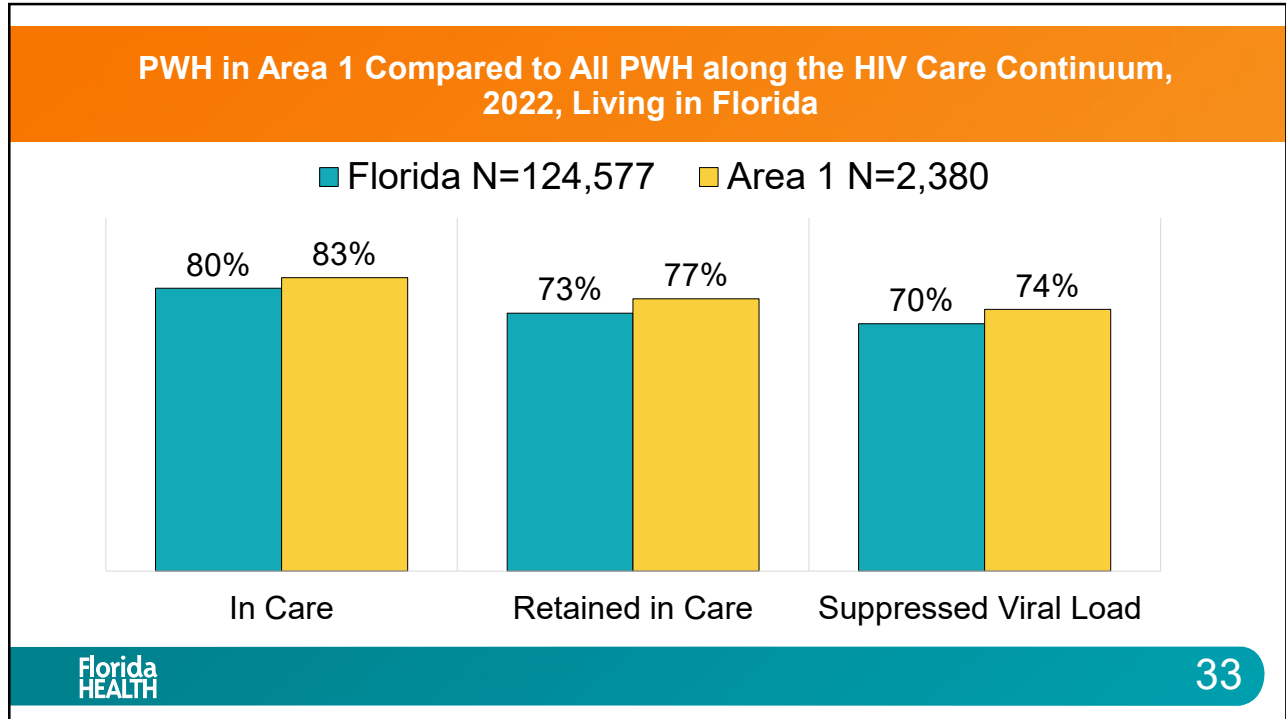
HIV Care Continuum in Florida

Florida HEALTH 31

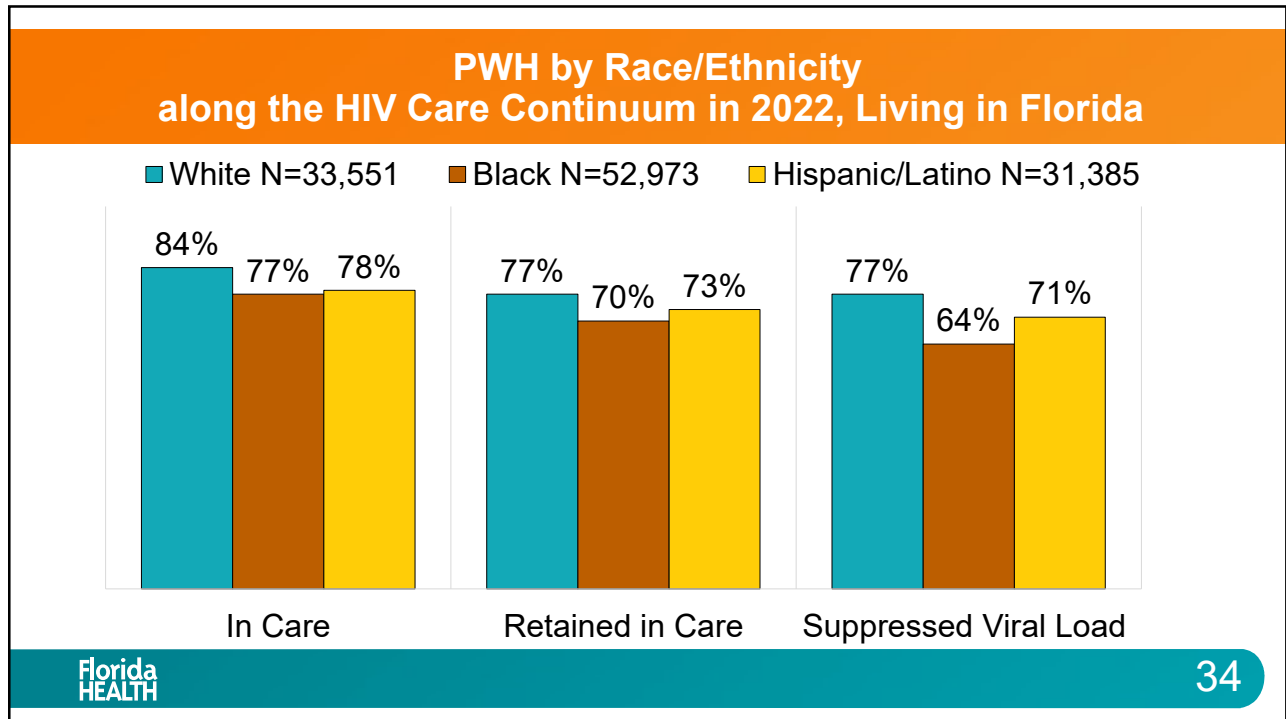
31



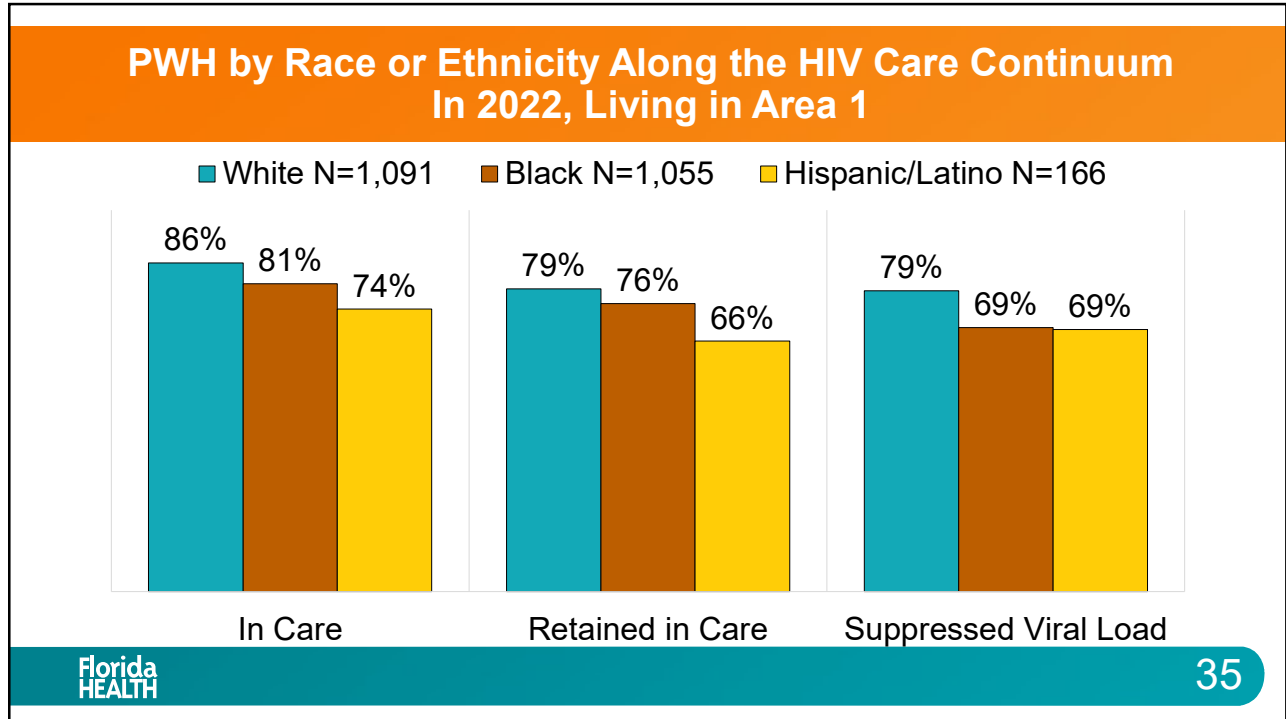
32



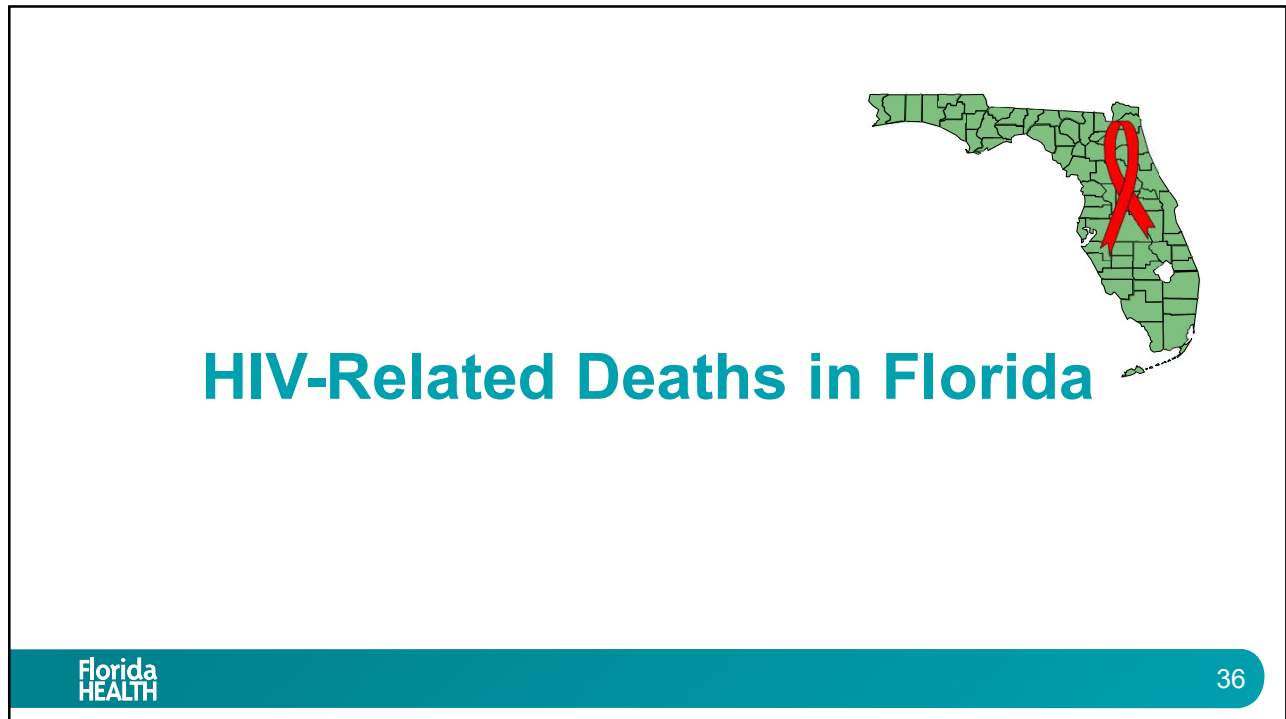
33



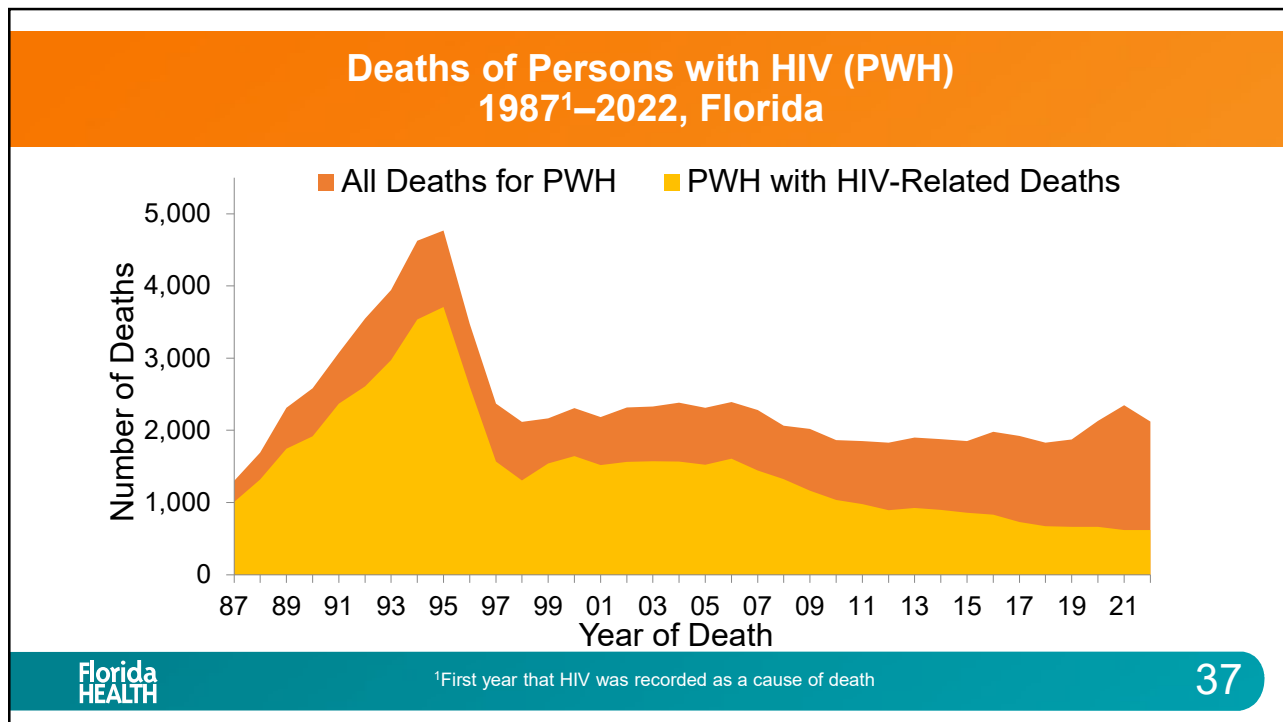
34



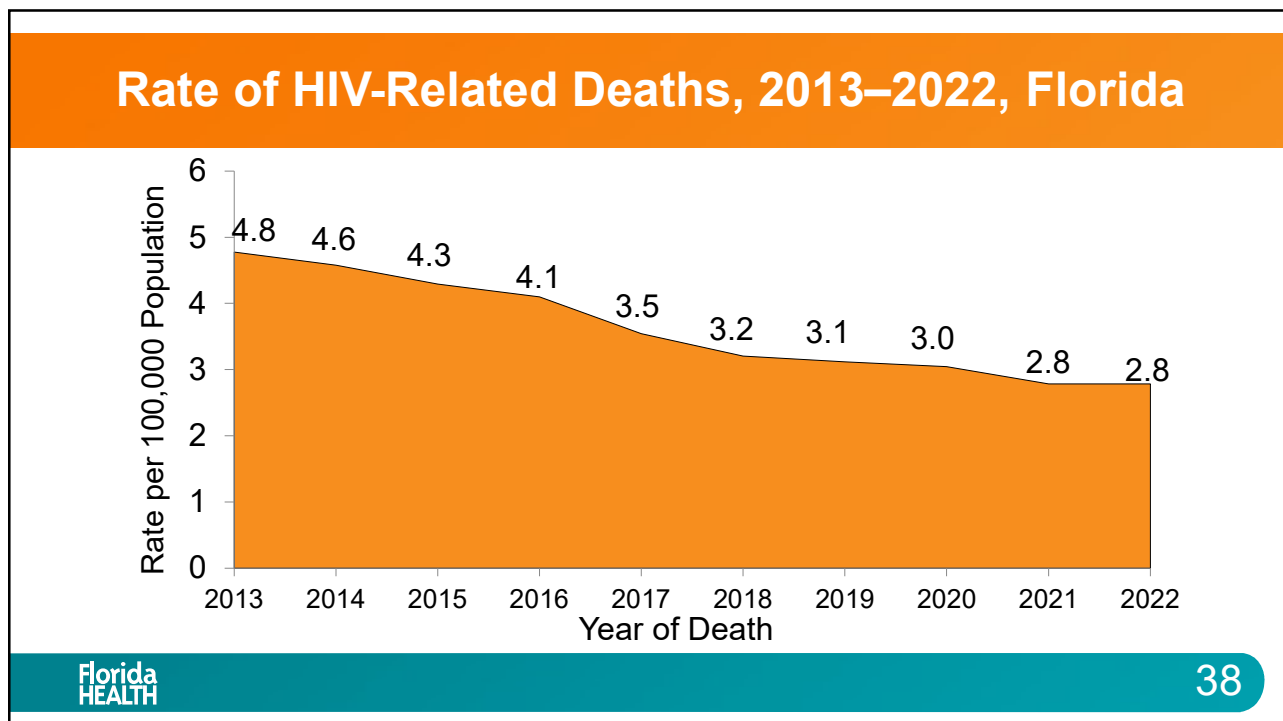
35



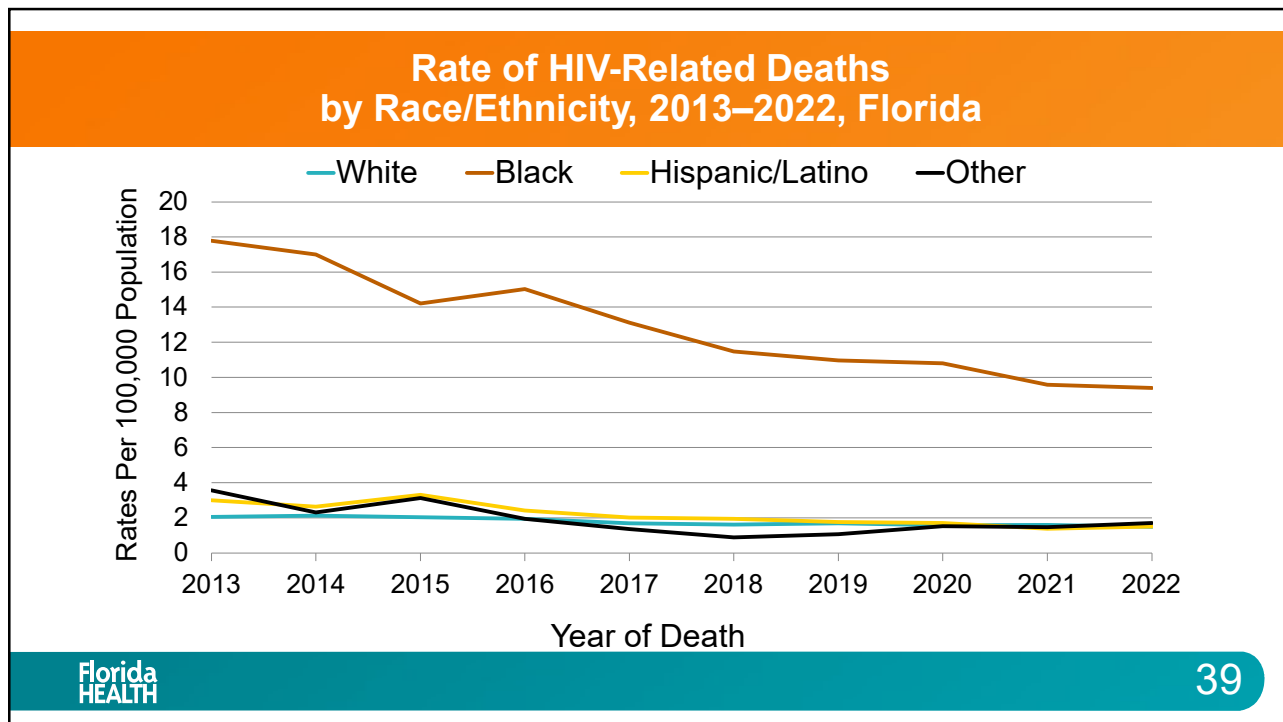
36



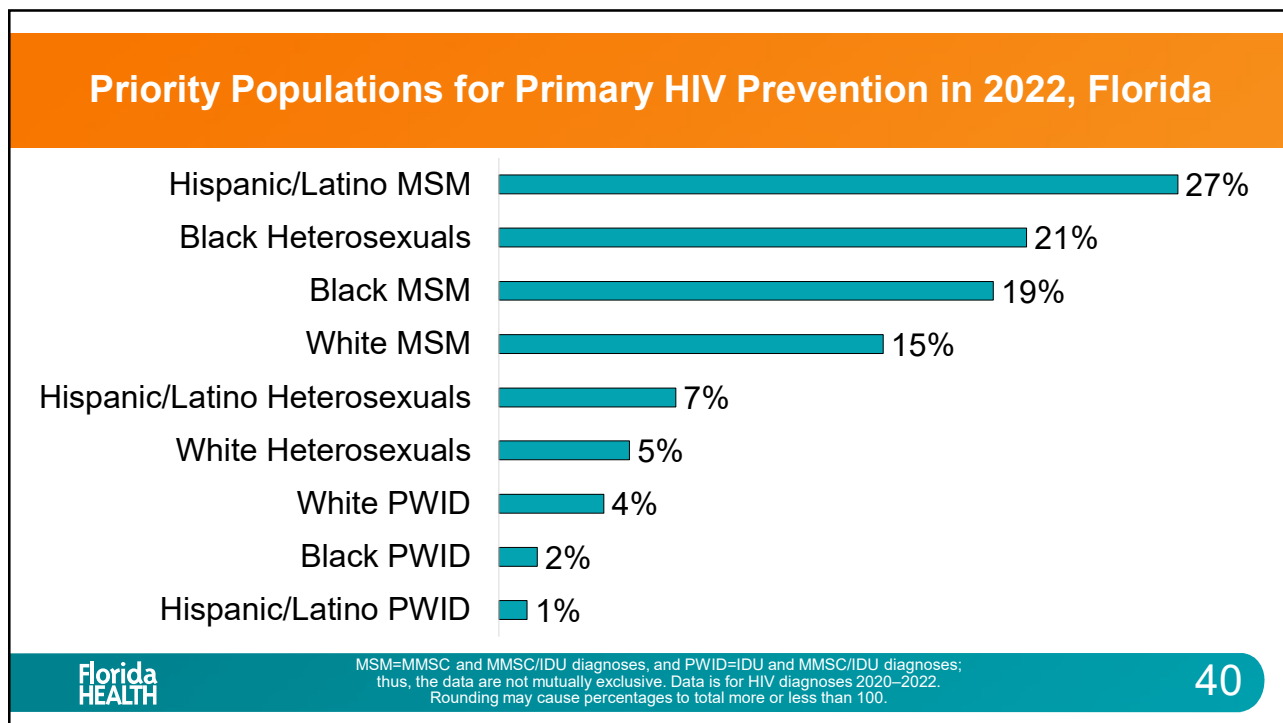
37



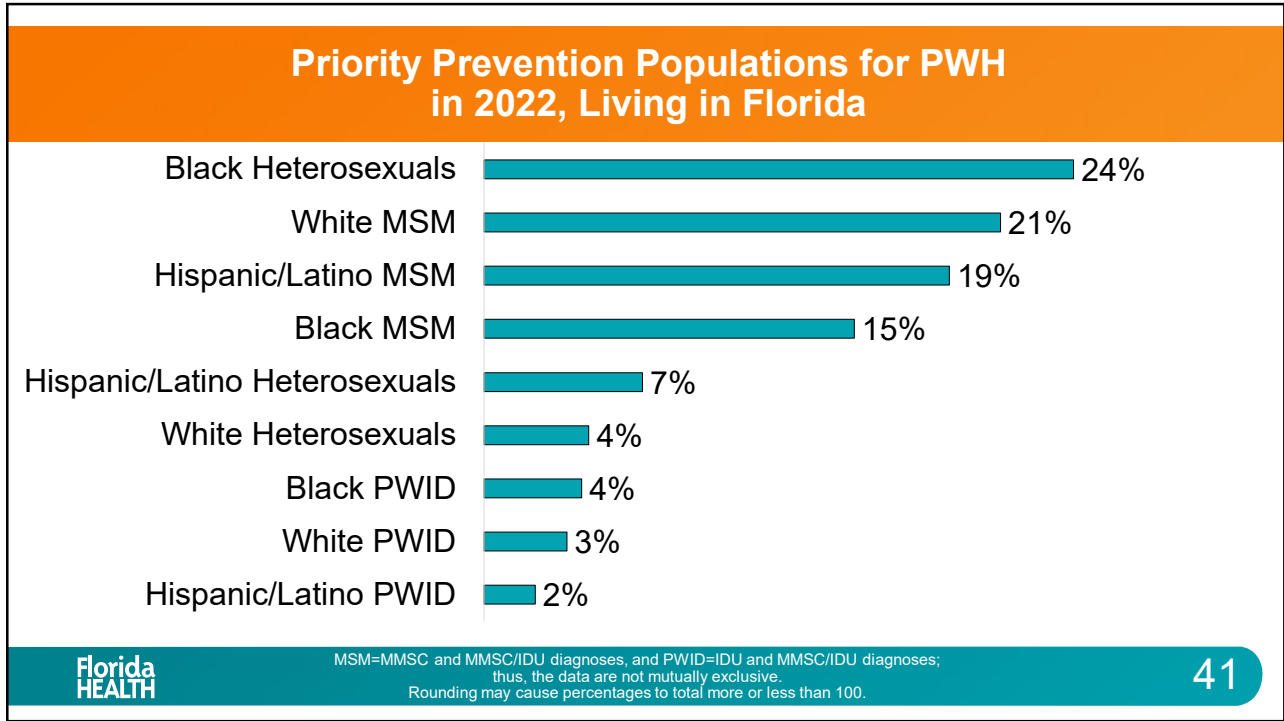
38



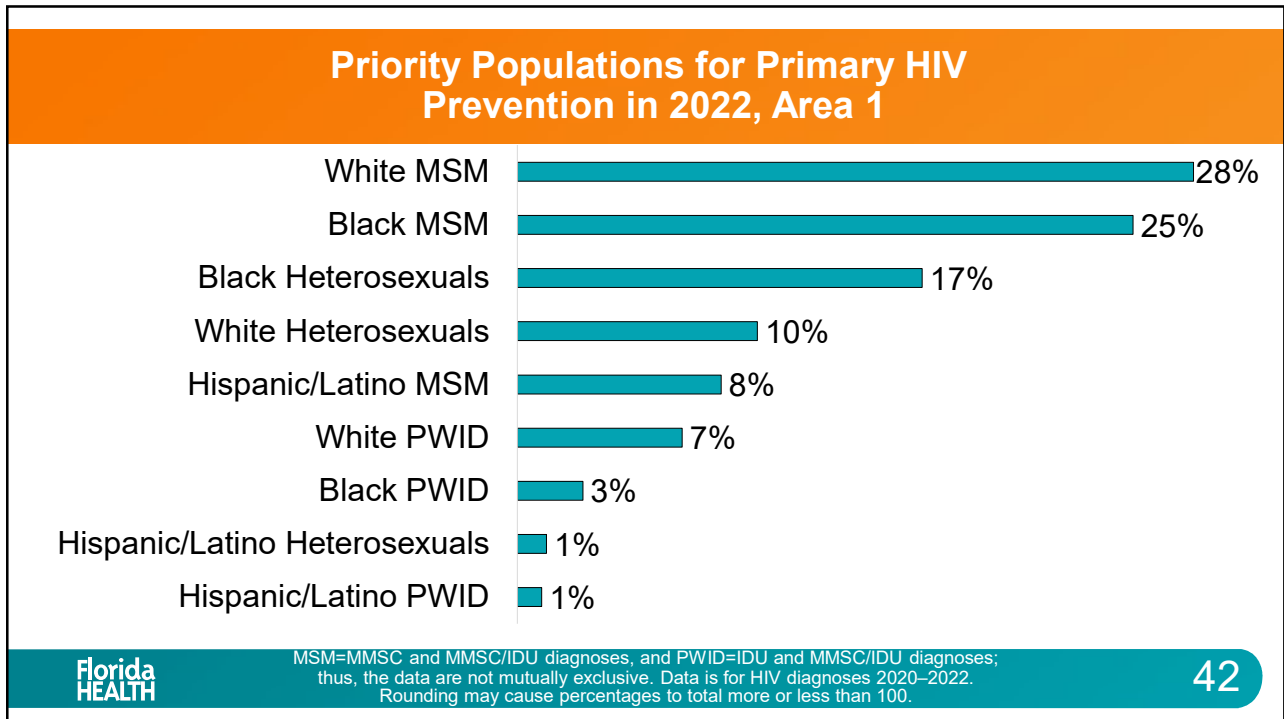
39



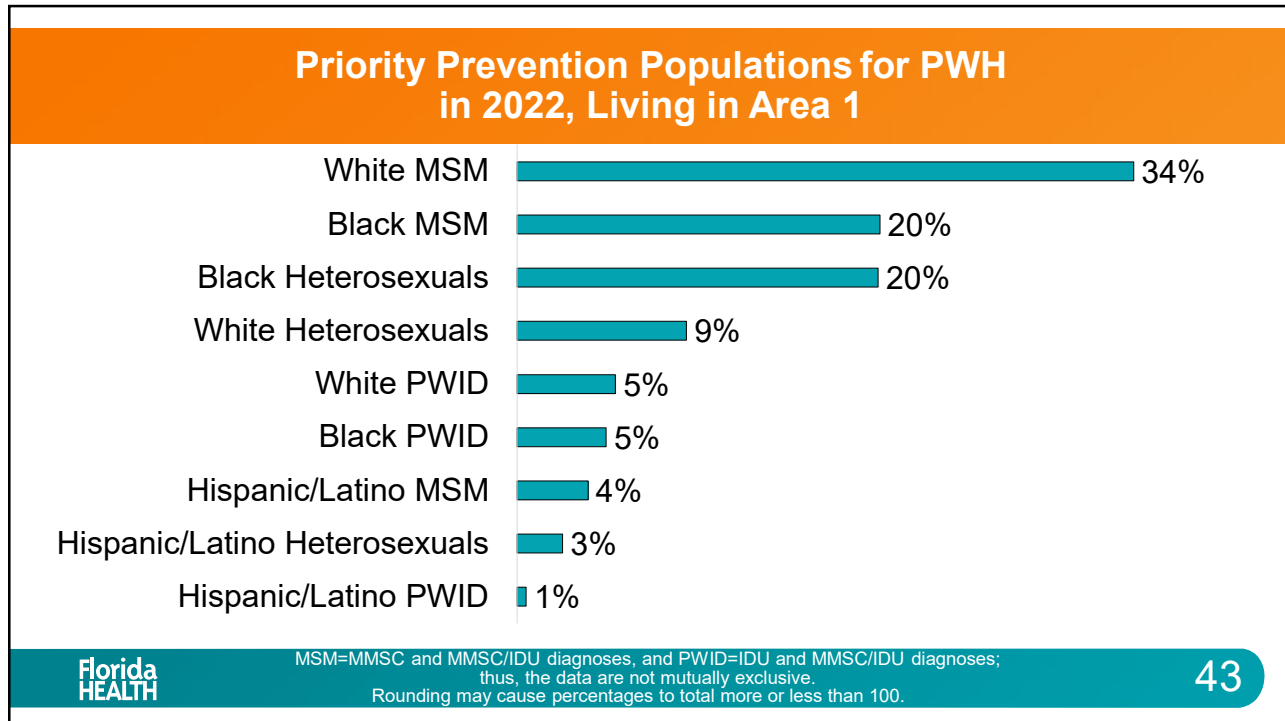
40



41



42



43

Florida HIV/AIDS Surveillance Data Contacts

<p>Daniel Grischy, MD, MPH Surveillance Program Manager Florida Department of Health Phone: 850-245-4357 Email: Daniel.Grischy@flhealth.gov</p>	<p>Lorene Maddox, MPH Surveillance Data Analysis Manager Florida Department of Health Phone: 850-901-6968 Email: Lorene.Maddox@flhealth.gov</p>
<p>Michelle Battles Prevention Program Manager Florida Department of Health Phone: 850-901-6716 Email: Michelle.Battles@flhealth.gov</p>	<p>Colby Cohen, MPH Research Data Analyst Florida Department of Health Phone: (850) 901-6977 Email: Colby.Cohen@flhealth.gov</p>
	<p>Angela Campbell, MPH Research Data Analyst Florida Department of Health Phone: 850-901-6956 Email: Angela.Campbell@flhealth.gov</p>

HIV/AIDS surveillance data are frozen on June 30 for the previous calendar year.
These are the same data used for FLHealthCHARTS and all grant-related data.
flhealthcharts.com/charts/CommunicableDiseases/default.aspx

44

